

LABOR AND MATERIALS

1	Copper Lead	Connection	3/4"	\$	2.41
1	Curb	Cock Valve T.S. & V.	3/4 in.	\$	3.41
1	Service box Old returned	Short 3 1/2 x 4 1/2 Long 4 1/2 x 5 1/2 Buff or Rdway		\$	4.18
24	Ft.	3/4 in. Copper G.I. C.I.	Pipe at 40	\$	9.60
	Nipples	in. at		\$	
	Bushings	to in. at		\$	
	Red'g Inc'g	Coupl'gs to in. at		\$	
	Union	in. at		\$	
	Meter	in. at		\$	
	Lead Joints at			\$	
	Compound Joints at			\$	
	Maintenance Foreman			\$	
	Hrs. Water Maint. Man-1 at			\$	
	Hrs. Water Maint. Man-2 at			\$	
2	Hrs. Garage Foreman	at 1.59		\$	3.18
18	Hrs. Labor	at 1.13		\$	20.34
2	Hrs. Compressor at	1.50		\$	3.00
	Compensation Ins. at	\$3.761 per C		\$	91
	Trucking			\$	1.50
	Pav't Patch			\$	12.60
	Tap by Lareau	9-28-54		\$	
	O'head			\$	
				\$	61.13

98.53

79-54

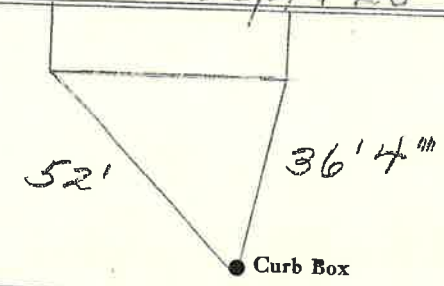
St. Pl. Ave. No. 32

Fourth

Name of Owner

Atwell

Labor and Mat'l. Report Sept. 28 19 54



6" Main

Elev. of Main at tap 3704'

Gate at ●

● Gate at

● Curb Box