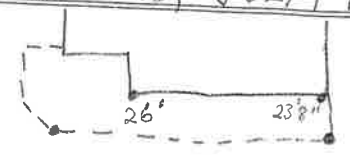


LABOR AND MATERIALS

1	Copper } Connection	3/4	\$	
1	Curb } Cock Valve	3/4 in.	\$	
1	Service box } Short 3-1/2 x 4-1/2		\$	
	Old returned } Long 4-1/2 x 5-1/2		\$	
23	Ft. 3/4 in. } Copper		\$	
			\$	
	Nipples	in. at	\$	
	Bushings	to in. at	\$	
	Red'g		\$	
	Inc'g		\$	
	Union	in. at	\$	
	Meter	in. at	\$	
			\$	
	Compound Joints at		\$	
	Maintenance Foreman		\$	
	Hrs. Water Maint. Man - 1 at		\$	
	Hrs. Water Maint. Man - 2 at		\$	
	Hrs. Garage Foreman	at	\$	
	Hrs. Labor	at	\$	
	Hrs. Compressor at		\$	
			\$	
	Trucking		\$	
	Pav't Patch		\$	
			\$	
			\$	
			\$	
			\$	
			\$	

St. FOURTH No. 36
 Name of Owner _____

Labor and Mat'l. Report 1933, JULY 17



22' 9" 16'

● Curb Box

6" Main Elev. of Main at tap 5'

Gate at ● ● Gate at

● Curb Box

OLD TAP SHUT OFF AT
 MAIN