

LABOR AND MATERIALS

| | | | | | |
|----|-----------------------------|---|--------------------------------------|------------|----------|
| 1 | Copper Lead | { Connection | $\frac{3}{4}$ | | \$ 1.31 |
| 1 | Curb | { Cock Valve I. S. & V. | $\frac{3}{4}$ | in. | \$ 1.75 |
| 1 | Service Box Old returned | { Sheet $2\frac{1}{2} \times 4\frac{1}{2}$ Long $4\frac{1}{2} \times 5\frac{1}{2}$ Buff. or Rdway | | | \$ 1.60 |
| 10 | Ft. | $\frac{3}{4}$ in. | { Copper Galv. Iron Cast Iron. | Pipe at 18 | \$ 1.80 |
| | Nipples | in. at | | | \$ |
| | Bushings | to in. at | | | \$ |
| | Red'g Inc'g | { Couplings | to in. at | | \$ |
| | Union | in. at | | | \$ |
| | Meter | in. at | | | \$ |
| | Lead Joints | at | | | \$ |
| | Leadite Joints | at | | | \$ |
| | Hrs. Foreman | at | | | \$ |
| 5 | Hrs. Chauffeur | at | 6 2 1/2 | | \$ 3.12 |
| 4 | Hrs. Tapper | at | | | \$ 2.50 |
| | Hrs. Labor | at | | | \$ |
| | Hrs. Labor | at | | | \$ |
| | Hrs. Compressor | at | | | \$ |
| | Compensation Ins. | | | | \$.18 |
| | Trucking | | | | \$ 1.00 |
| | Builders Use of Water | Patch | | | \$ 5.00 |
| | Tap Hessel | | | | \$ |
| | | | | | \$ |
| | | | | | \$ |
| | | | | | \$ |
| | | | | | \$ |
| | | | | | \$ |
| | | | | | \$ 18.26 |

99 -- 1940

St.

Pl.

Fulton

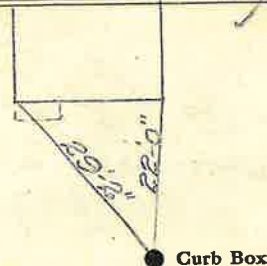
Ave. No. 18

Name of Owner

Bannon

Labor and Mat'l. Report

Aug 28 1940



10" Main

Elev. of
Main at tap 6'

Gate at ●

● Gate at

● Curb Box

Stb