

# LABOR AND MATERIALS

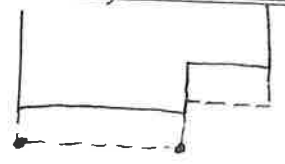
1	Copper } Connection	3/4	\$
1	Curb } Cock Valve F.C. & V.	3/4 in.	\$
1	Service box } Short 3-1/2 x 4-1/2 Old returned } Long 4-1/2 x 5-1/2		\$
23	Ft. } Copper Pipe at	3/4 in.	\$
	Nipples	in. at	\$
	Bushings	to in. at	\$
	Red'g		
	Inc'g		
	Union	in. at	\$
	Meter	in. at	\$
	Compound Joints at		\$
	Maintenance Foreman		\$
	Hrs. Water Maint. Man - 1 at		\$
	Hrs. Water Maint. Man - 2 at		\$
	Hrs. Garage Foreman at		\$
	Hrs. Labor at		\$
	Hrs. Compressor at		\$
	Trucking		\$
	Pav't Patch		\$
			\$
			\$
			\$
			\$
			\$

FULTON

St. No. 23

Name of Owner  
BROOMELL

Labor and Mat'l. Report 1939, Nov. 30



18'3" 24'0"

● Curb Box

10" Main

Elev. of Main at tap 5'

Gate at ●

● Gate at

● Curb Box

OLD SHUT OFF