

LABOR AND MATERIALS

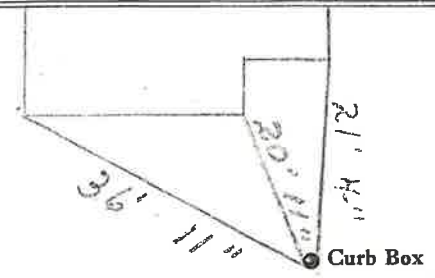
1 Copper } Connection 3/4" \$  
 Lead }  
 1 Curb } Cock } 3/4" in. Oriseal. \$  
 Valve }  
 T.S. & V. }  
 1 Service box { Short 3 1/2 x 4 1/2 }  
 Old returned { Long 4 1/2 x 5 1/2 }  
 { Buff or Rdway } \$  
 26 Ft. 3/4" in. { Copper } Pipe at \$  
 { C.I. }  
 { C.I. }  
 Nipples in. at \$  
 Bushings to in. at \$  
 Red'g }  
 Inc'g } Coupl'gs to in. at \$  
 Union in. at \$  
 Meter in. at \$  
 Lead Joints at \$  
 Compound Joints at \$  
 Maintenance Foreman \$  
 Hrs. Water Maint. Man-1 at \$  
 Hrs. Water Maint. Man-2 at \$  
 Hrs. Garage Foreman at \$  
 Hrs. Labor- at \$  
 Hrs. Compressor at \$  
 Compensation Ins. at \$ per C \$  
 Trucking \$  
 Pav't Patch \$  
Tap by Larcav & Co. \$  
9-25-68. \$  
 O'head \$

-St.  
 -Pl.  
 Ave. No. 18

Grade

Name of Owner  
Paul Labiszak.

Labor and Mat'l. Report Sept. 25 1968.



4" Main Elev. of Main at tap 5'

Gate at • Gate at

• Curb Box