

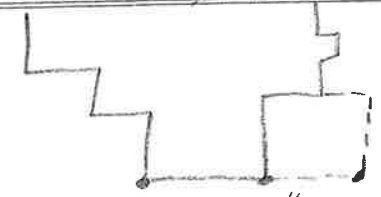
# LABOR AND MATERIALS

1	Copper } Connection	3/4	\$
	Lead }		
1	Curb } Cock Valve } T.S. & V. }	3/4 in.	\$
1	Service box } Old returned }	{ Short 3-1/2 x 4-1/2 } { Long 4-1/2 x 5-1/2 }	\$
12	Ft. 3/4 in. } Copper } Gal. }	Pipe at	\$
	Nipples	in. at	\$
	Bushings	to in. at	\$
	Red'g		
	Inc'g		
	Union	in. at	\$
	Meter	in. at	\$
	Compound Joints at		\$
	Maintenance Foreman		\$
	Hrs. Water Maint. Man - 1 at		\$
	Hrs. Water Maint. Man - 2 at		\$
	Hrs. Garage Foreman	at	\$
	Hrs. Labor	at	\$
	Hrs. Compressor at		\$
	Trucking		\$
	Pav't Patch		\$
			\$
			\$
			\$
			\$
			\$
			\$

GAGE Ave. No. 19

Name of Owner ROBERT HILDRETH

Labor and Mat'l. Report 19 37, MAY 8



19'2" 16'5" 20'2"

● Curb Box

REVERSE VALVE

4" Main

Elev. of Main at tap 5'

Gate at ● Gate at

● Curb Box

OLD SHUT OFF