

LABOR AND MATERIALS

Copper } Connection.....	\$
Lead }	\$
Curb { Cock Valve }	\$
{ T. S. & V. }	\$
Service Box { Short 3 1/2 x 4 1/2 }	\$
Old returned { Long 4 1/2 x 5 1/2 }	\$
{ Buffer Rdway }	\$
Ft.....in. { Copper } Pipe at.....	\$
{ Galv Iron }	\$
{ Cast Iron }	\$
Nipples.....in. at	\$
Bushingsto.....in. at	\$
Red'g } Couplings.....to.....in. at	\$
Inc'g }	\$
Union.....in. at	\$
Meter.....in. at	\$
Lead Joints at	\$
Leadite Joints at	\$
Hrs. Foreman at	\$
Hrs. Chauffeur at	\$
Hrs. Tapper at	\$
Hrs. Labor at	\$
Hrs. Labor at	\$
Hrs. Compressor at	\$
Compensation Ins.	\$
Trucking	\$
Builders Use of Water	\$
.....	\$
.....	\$
.....	\$
.....	\$
.....	\$
.....	\$
.....	\$

St. 42
 Pt. 40
 Ave. No. 40

Gayfield

Name of Owner _____

Labor and Mat'l. Report AUG 24 1939 19

● Curb Box

.....Main

Gate at ●

Elev. of Main at tap.....

● Gate at

● Curb Box

Labor and Materials

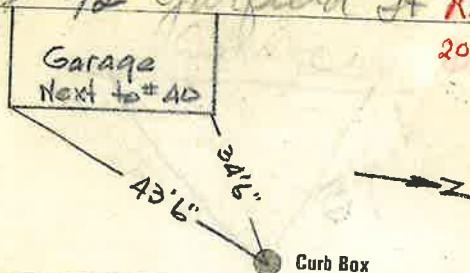
1	Copper	Connection	\$ 2.60
1	Curb	Cock Valve T.S. & V. in.	\$ 2.27
	Service Box	Short 3/4 x 1/2	\$ 1.38
	Old returned	Long 1/2 x 5/8	
		Buff. or Redway	
27	3/4	Copper Galv. Iron	Pipe at	\$ 4.86
		Cast Iron	
	Nipples	in. at	\$
	Bushings	to..... in. at	\$
	Red'g Inc'g	Couplings to..... in. at	\$
	Union	in. at	\$
	Meter	in. at	\$
	Lbs. Br. Stone	at	\$
	Lbs. Sand	at	\$
	Bags Cement	at	\$
	Paving Brick	Mack Red Asphalt at	\$
	Lead Joints	at	\$
	Leadite Joints	at	\$
1 1/2	Hrs. Foreman	at	\$ 9.4
13 1/4	Hrs. Common Labor	at Tapper	\$ 8.8
13 1/2	Hrs. Common Labor	at	\$ 6.05
	Hrs. Mason	at	\$
	Hrs. Mason's Helper	at	\$
	Hrs. Compressor	at	\$
	Compensation Ins.		\$.24
	Trucking		\$ 1.00
	Builders' Use of Water		\$
Total \$				20.75

31-207

Labor and Material Report

4-23-1931

#42 Garfield A REAR OF
20 SHERMAN



6 Main Elev of Main at tap 5

Gate at ● Gate at ●

● Curb Box

Lot

Meas. from Garage