

LABOR AND MATERIALS

1	Copper Lead	Connection	3/4"	\$ 2.60
1	Curb	Cock Valve T.S.&V.	3/4 in.	\$ 2.27
1	Service box - Old returned	Short 3 1/2 x 4 1/2 Long 4 1/2 x 5 1/2 Buff or Rdway		\$ 1.38
8	Ft. 3/4 in.	Copper G.I. C.I.	Pipe at	\$ 1.44
	Nipples	in. at		\$
	Bushings	to in. at		\$
	Red'g Inc'g	Coupl'gs. to in. at		\$
	Union	in. at		\$
	Meter	in. at		\$
	Lead Joints	at		\$
	Compound Joints	at		\$
3/4	Maintenance Foreman			\$.47
13/4	Hrs. Water Maint. Man-1	at		\$.38
	Hrs. Water Maint. Man-2	at		\$
	Hrs. Garage Foreman	at		\$
6 1/2	Hrs. Labor	at		\$ 2.93
	Hrs. Compressor	at		\$
	Compensation Ins. at \$	per C		\$.12
	Trucking			\$ 1.00
	Pav't Patch			\$
	O'head			\$
				\$ 12.59

✓ 31 - 210

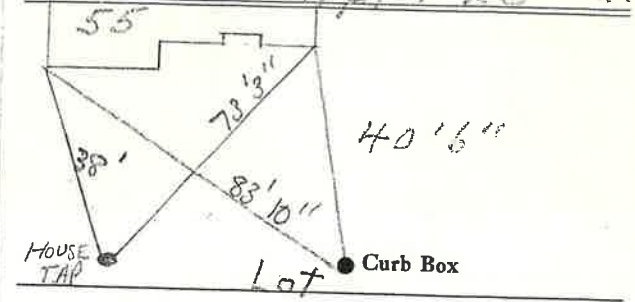
~~44~~
47

Garsfield

St. ~~44~~
Pt. ~~44~~
Ave. No. 53

Name of Owner

Labor and Mat'l. Report Apr. 23 1931



6" Main

Elev. of Main at tap 5'

Gate at ●

● Gate at

Lot Tap 1931 ● Curb Box
House #55 Garsfield St.
built on 2 Lots #53 & 55
This Lot Tap measured
from #55
See Card for #55