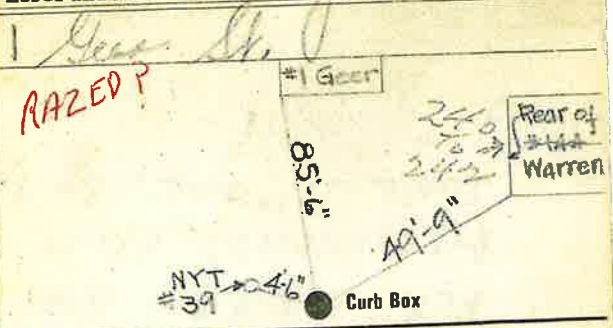


### Labor and Materials

1	Copper } Connection	3	\$ 2.70
1	Curb } Cock Valve } P.S. & V. } in.	3	\$ 2.39
1	Service Box } Short 3/4x4 1/2 } Long 4 1/2x5 1/2 } Buff. or Rdway }	3	\$ 1.45
9	Ft. in. } Copper Galv. Iron } Cast Iron } Pipe at.	3	\$ 2.43
	Nipples in. at.		\$
	Bushings to in. at.		\$
	Red'g } Inc'g } Couplings to in. at.		\$
	Union in. at.		\$
	Meter in. at.		\$
	Lbs. Br. Stone at.		\$
	Lbs. Sand at.		\$
	Bags Cement 'at.		\$
	Paving Brick } Mack Red Asphalt } at.		\$
	Lead Joints at.		\$
	Leadite Joints at.		\$
2	Hrs. Foreman at.		\$ 4.25
1.0	Hrs. Common Labor at.		\$ 4.50
	Hrs. Common Labor at.		\$
	Hrs. Mason at.		\$
	Hrs. Mason's Helper at.		\$
	Hrs. Compressor at.		\$
	Compensation Ins.		\$ .18
	Trucking.		\$ 11. -
	Builders' Use of Water Patch.		\$ 5. -
Total \$			70.90

### Labor and Material Report

June 24 1930



Curb Box

New Bakery Shop