

LABOR AND MATERIALS

1	Copper Lead	Connection	1"	\$	428
1	Curb	Cock Valve T.S. & V.	1" in.	\$	525
1	Service box Old returned	Short 3 1/2 x 4 1/2 Long 4 1/2 x 5 1/2 Buff or Rdway.		\$	4.69
10	Ft. 1 in.	Copper G.I. Pipe at	56	\$	560
	Nipples	in. at		\$	
	Bushings	to in. at		\$	
	Red'g Inc'g	Coupl'gs. to in. at		\$	
	Union	in. at		\$	
	Meter	in. at		\$	
	Lead Joints at			\$	
	Compound Joints at			\$	
2	Maintenance Foreman	1.51		\$	3.02
1	Hrs. Water Maint. Man-1 at			\$	
11	Hrs. Water Maint. Man-2 at	124		\$	1364
	Hrs. Garage Foreman at			\$	
24	Hrs. Labor at	113		\$	2712
	Hrs. Compressor at			\$	
	Compensation Ins. at \$	4.29 per C.		\$	1.88
	Trucking			\$	1.50
	Pav't Patch			\$	11.70
	Tap by Gissard	5-19-55		\$	
	O'head			\$	
				\$	75.19

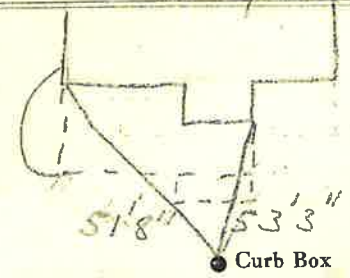
St. 479  
Pl. To 481  
Ave. No.

Glen

Name of Owner

Viele

Labor and Mat'l. Report May 19 1955



14" Main

Elev. of Main at tap 5'

Gate at • Gate at

• Curb Box