

LABOR AND MATERIALS

Copper } Connection \$
 Lead }
 Curb { Cock Valve } in. \$
 { T. S. & V. }
 Service Box } Short 3 1/2 x 4 1/2 }
 Old returned } Long 4 1/2 x 5 1/2 } \$
 { Buff or Rdway }
 Ft. in. { Copper } Pipe at \$
 { Galv Iron }
 { Cast Iron }
 Nipples in. at \$
 Bushings to in. at \$
 Red'g } Couplings to in. at \$
 Inc'g }
 Union in. at \$
 Meter in. at \$
 Lead Joints at \$
 Leadite Joints at \$
 Hrs. Foreman at \$
 Hrs. Chauffeur at \$
 Hrs. Tapper at \$
 Hrs. Labor at \$
 Hrs. Labor at \$
 Hrs. Compressor at \$
 Compensation Ins. \$
 Trucking \$
 Builders Use of Water \$
 \$
 \$
 \$
 \$
 \$

St. 982
 -Pl-
 Ave. No. 285

Glen

Name of Owner

Labor and Mat'l. Report Aug. 23 1939



Glen St

7 484

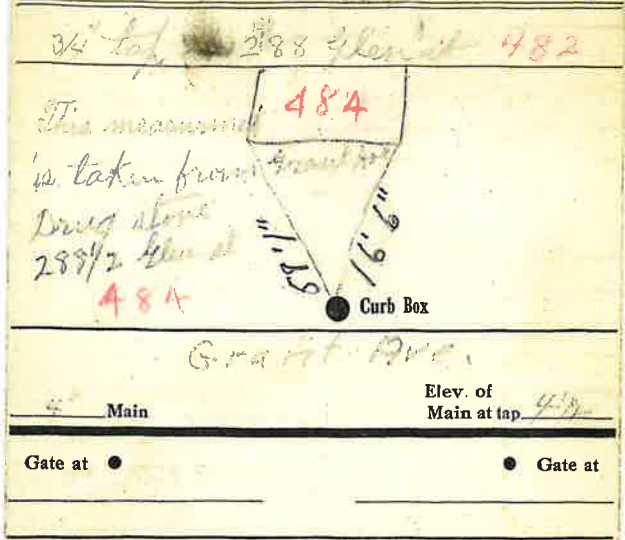
Main Grant Ave Elev. of Main at tap

Gate at ● Gate at ●

● Curb Box
 Shut off at Curb
 July 26-61
House Razed.

Labor and Materials

1	Copper	} Connection ^{3/4}	\$ 1.25
	Lead			
1	Curb	} Cock Valve T.S.&V. ^{3/4}in	\$ 1.70
1	Service Box	} Short 3 1/2 x 4 1/2 Long 4 1/2 x 5 1/2 Buff. or Runway	\$ 1.45
	Old returned			
18	Ft. ^{3/4}	} Copper Galv. Iron Cast Iron	} Pipe at	\$ 2.43
	in.			
	Nipplesin. at	\$	
	Bushingstoin. at	\$	
	Red'g Inc'g	} Couplings.....to.....in. at	\$	
	Union.....in. at			\$
	Meter.....in. at	\$		
	Lbs. Br. Stone at	\$		
	Lbs. Sand at	\$		
	Bags Cement at	\$		
	Paving Brick	} Mack Red Asphalt	} at	\$
	Lead Joints at			
	Leadite Joints at	\$		
7	Hrs. Foreman at	6.25	\$ 4.38	
4 1/2	Hrs. Common Labor at	50	\$ 2.25	
15	Hrs. Common Labor at	45	\$ 6.75	
	Hrs. Mason at		\$	
	Hrs. Masons Helper at		\$	
	Hrs. Compressor at		\$	
	Compensation Ins		\$.50	
	Trucking		\$ 1.-	
	Builders Use of Water		\$	
Total				\$ 21.71



● Curb Box

Old tap shut off at main

This Tap shut off at Curb July 26-41

JLB

House Razed on Glen St.