

LABOR AND MATERIALS

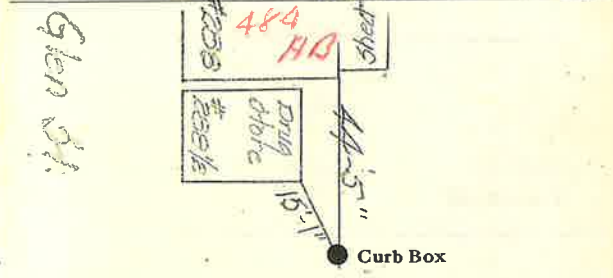
Copper	}	Connection			\$
Lead					
Curb	}	Cock Valve T. S. & V.			\$
Service Box	}	Short 3 1/2 x 4 1/2 Long 4 1/2 x 5 1/2 Buffer Rdway			\$
Old returned					
Ft.	}	Copper Galv Iron Cast Iron			\$
in.				Pipe at	
Nipples					\$
			in. at		
Bushings					\$
			to		
Red'g Inc'g	}	Couplings			\$
					in. at
Union					\$
			in. at		
Meter					\$
			in. at		
Lead Joints at					\$
Leadite Joints at					\$
Hrs. Foreman at					\$
Hrs. Chauffeur at					\$
Hrs. Tapper at					\$
Hrs. Labor at					\$
Hrs. Labor at					\$
Hrs. Compressor at					\$
Compensation Ins.					\$
Trucking					\$
Builders Use of Water					\$
					\$
					\$
					\$
					\$
					\$

484A15

St. Glen
 Pl.
 Ave. No. 288 1/2

Name of Owner _____

Labor and Mat'l. Report Aug. 23 1910



Main Grant Ave. Elev. of Main at tap _____

Gate at ● _____ ● Gate at _____

● Curb Box

Labor and Materials

1	Copper	Connection	1/4"	\$ 3.50
1	Lead			
1	Curb	Cock Valve	1" in	\$ 3.06
		T.S.&V.		
1	Service Box	Short 3 1/2 x 4 1/2		\$ 1.45
	Old returned	Long 4 1/2 x 5 1/2		
		Buff. or Railway		
19 Ft.	1/4" in.	Copper	Pipe at 7 3/4	\$ 4.37
		Galv. Iron		
		Cast Iron		
	Nipples	in. at		\$
	Bushings	to in. at		\$
	Red'g Inc'g	Couplings	to in. at	\$
	Union	in. at		\$
	Meter	in. at		\$
	Lbs. Br. Stone	at		\$
	Lbs. Sand	at		\$
	Bags Cement	at		\$
	Paving Brick	Mack Red Asphalt	at	\$
	Lead Joints	at		\$
	Leadite Joints	at		\$
7	Hrs. Foreman	at	6.25	\$ 4.38
4 1/2	Hrs. Common Labor	at	50	\$ 2.25
15	Hrs. Common Labor	at	45	\$ 6.75
	Hrs. Mason	at		\$
	Hrs. Masons Helper	at		\$
	Hrs. Compressor	at		\$
	Compensation Ins			\$ 5
	Trucking			\$ 1.5
	Builders Use of Water			\$

Total \$27.26..

1935-175

Labor and Material Report

Out 1 1935

1" tap at 28 1/2' main at



484 AB

Main

Elev. of Main at tap 17 6'

Gate at ●

● Gate at

● Curb Box

Old tap shut off at main

[Handwritten signature]