

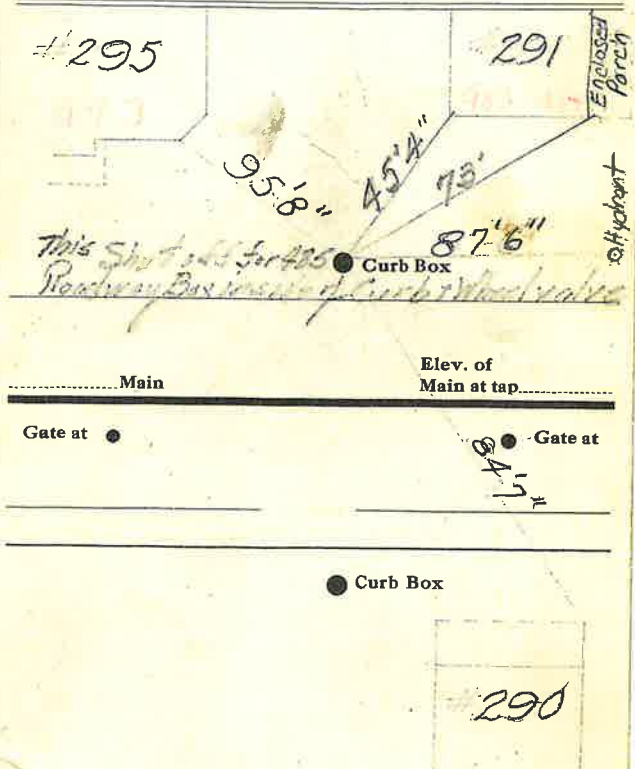
LABOR AND MATERIALS

Copper } Connection	\$
Lead }	\$
Curb { Cock Valve T. S. & V. }	in. \$
Service Box } Short 3 1/2 x 4 3/4 }	\$
Old returned } Long 4 3/4 x 5 3/4 }	\$
} Buff or Rdway }	\$
Ft. in. } Copper Galv Iron Cast Iron } Pipe at	\$
Nipples	in. at \$
Bushings	to
in. at	\$
Red'g } Couplings	to
Inc'g }	in. at \$
Union	in. at \$
Meter	in. at \$
Lead Joints at	\$
Leadite Joints at	\$
Hrs. Foreman at	\$
Hrs. Chauffeur at	\$
Hrs. Tapper at	\$
Hrs. Labor at	\$
Hrs. Labor at	\$
Hrs. Compressor at	\$
Compensation Ins.	\$
Trucking	\$
Builders Use of Water	\$
.....	\$
.....	\$
.....	\$
.....	\$
.....	\$

985
487
St.
Pl.
Ave. No. 251

Name of Owner

Labor and Mat'l. Report AUG 23 1939 19



Main Elev. of Main at tap

Gate at ● Gate at ●

● Curb Box

290

73LX 2 MA VAS

This shut off for 485 Roadway Box inside of curb and wheel valve