

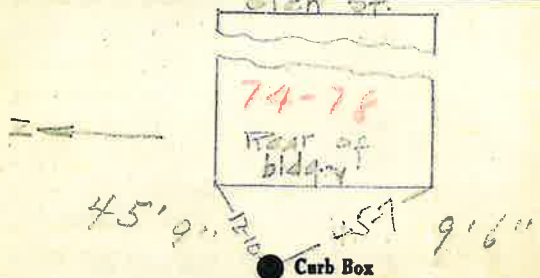
Labor and Materials

Copper	} Connection.....	\$	
Lead				
Curb	} Cock Valve } } T. S. & V. } in	\$	
Service Box				
Old returned				
	Short 3½ x 4½	} Pipe at	\$	
	Long 4½ x 5½			
	Buff. or Rdway			
Ft.	in.			
	} Copper } } Galv Iron } } Cast Iron }			
Nipples		in. at	\$	
Bushings		to	in. at	\$
Red'g	} Conplings.....	to	in. at	\$
Inc'g				
Union	in. at	\$		
Meter	in. at	\$		
Lead Joints at	\$			
Leadite Joints at	\$			
Hrs. Foreman at	\$			
Hrs. Chauffeur at	\$			
Hrs. Tapper at	\$			
Hrs. Labor at	\$			
Hrs. Labor at	\$			
Hrs. Compressor at	\$			
Compensation Ins.	\$			
Trucking	\$			
Builders Use of Water	\$			
.....	\$			
.....	\$			
.....	\$			
.....	\$			
.....	\$			
.....	\$			
.....	\$			
.....	\$			
.....	\$			
.....	\$			
.....	\$			
.....	\$			
.....	\$			
.....	\$			
.....	\$			
.....	\$			
.....	\$			
.....	\$			
.....	\$			

St.
Pl. **74 78**
Ave. No.

Name of Owner
Anna Brasell

Labor and Mat'l. Report *City* 19 *17*



This Place Razed.

..... Main Alley Elev. of Main at tap.....

Gate at ● Gate at

● Curb Box
This Place shut off at Curb box, also the 2" line that fed it off Park St. is shut off at curb. See Park St. Card.