

LABOR AND MATERIALS

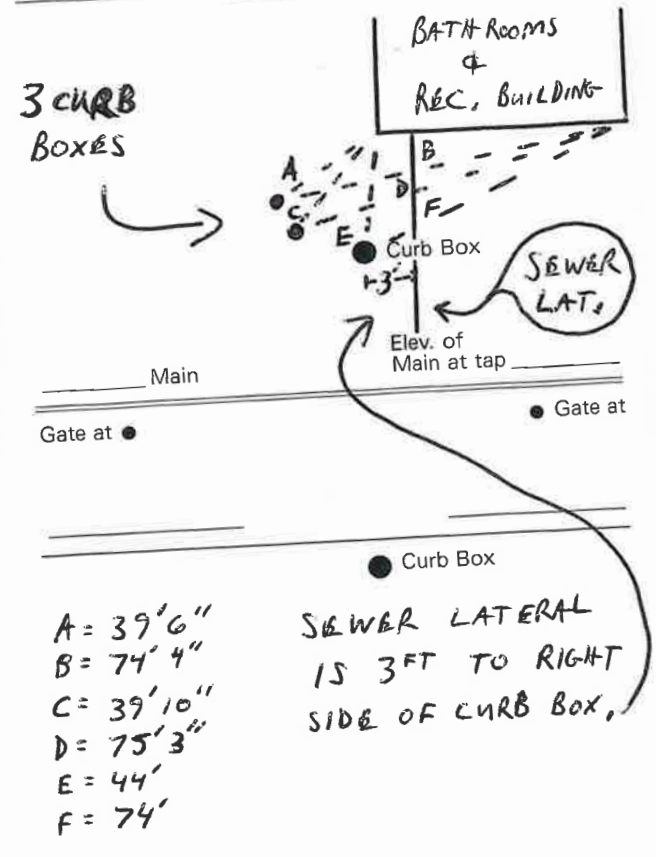
Copper	}	Connection			\$	
Lead						
Curb	}	Cock Valve T.S. & V.	in.		\$	
Service box	{	Short 3-1/2 x 4-1/2			\$	
Old returned			}	Long 4-1/2 x 5-1/2		
Ft.	}	Copper G.I. C.I.	in.	Pipe at	\$	
Nipples		in. at			\$	
Bushings		to		in. at	\$	
Red'g					\$	
Inc'g					\$	
Union		in. at			\$	
Meter		in. at			\$	
					\$	
Compound Joints at					\$	
Maintenance Foreman					\$	
Hrs. Water Maint. Man - 1 at					\$	
Hrs. Water Maint. Man - 2 at					\$	
Hrs. Garage Foreman		at			\$	
Hrs. Labor		at			\$	
Hrs. Compressor at					\$	
					\$	
Trucking					\$	
Pav't Patch					\$	
					\$	
					\$	
					\$	
					\$	

BATHROOMS

CRANDALL PARK St. _____
Pl. _____
Ave. No. **REC. BLDG.**

Name of Owner
CITY OF GLENS FALLS

Labor and Mat'l. Report 19 _____



Labor and Materials

Copper	} Connection.....	\$		
Lead					
Curb	{ Cock Valve T. S. & V. } in.	\$		
Service Box				{ Short 3 1/2 x 4 1/2 Long 4 1/2 x 5 1/2 Buff. or Rdway }	\$
Old returned					
Ft. in.	{ Copper Galv. Iron Cast Iron }	} Pipe at.....	\$		
Nipples..... in. at.....				} Bushings..... to..... in. at.....	\$
Red'g } Couplings..... to..... in. at.....					
Inc'g }	} Union..... in. at.....	\$			
Meter..... in. at.....			\$		
Lbs. Br. Stone at.....	\$				
Lbs. Sand at.....		\$			
Bags Cement at.....	\$				
Paving Brick		{ Mack Red Asphalt }	} at.....	\$	
Lead Joints at.....	\$				
Leadite Joints at.....					\$
Hrs. Foreman at.....	\$				
Hrs. Common Labor at.....		\$			
Hrs. Common Labor at.....	\$				
Hrs. Mason at.....		\$			
Hrs. Mason's Helper at.....	\$				
Hrs. Compressor at.....		\$			
Compensation Ins.....	\$				
Trucking.....		\$			
Builders' Use of Water.....	\$				
Total \$.....					

MEASURED IN

Labor and Material Report

JUNE 19 1974

REC FIELD-LITTLE PARK

GLEN ST

Curb stop for
Dick Crowe's
spigot is nearby

Gate at

- Buried -

tap

Gate at

N.Y.T.
Pole #13

Curb Box

GLEN ST

58'-7"

MABLE TREE
(stump)

10'-3"

CURB BOX

Labor and Materials

Copper lead } Connection.....	\$.....
urb } Cock }	in. \$.....
	Valve }
	T. S. & V. }
Service Box } Short 3 1/2 x 4 1/2 }	\$.....
ld returned } Long 4 1/2 x 5 1/2 }	\$.....
	Buff. or Rdway }
t.....in. } Copper } Pipe at.....	\$.....
	Galv. Iron }
	Cast Iron }
ipples.....in. at.....	\$.....
ushings.....to.....in. at.....	\$.....
ed'g } Couplings.....to.....in. at.....	\$.....
c'g }	\$.....
nion.....in. at.....	\$.....
eter.....in. at.....	\$.....
s. Br. Stone at.....	\$.....
s. Sand at.....	\$.....
gs Cement at.....	\$.....
ving Brick } Mack } at.....	\$.....
	Red }
	Asphalt }
ad Joints at.....	\$.....
adite Joints at.....	\$.....
. Foreman at.....	\$.....
. Common Labor at.....	\$.....
. Common Labor at.....	\$.....
. Mason at.....	\$.....
. Mason's Helper at.....	\$.....
. Compressor at.....	\$.....
mpensation Ins.....	\$.....
cking.....	\$.....
ders' Use of Water.....	\$.....
Total \$.....	

Lowell Park upper 4th st

Gate box

Alton St

222

66' 10" x 66' 6"

● Curb Box

Main

Elev. of Main at tap

Gate at ●

● Gate at

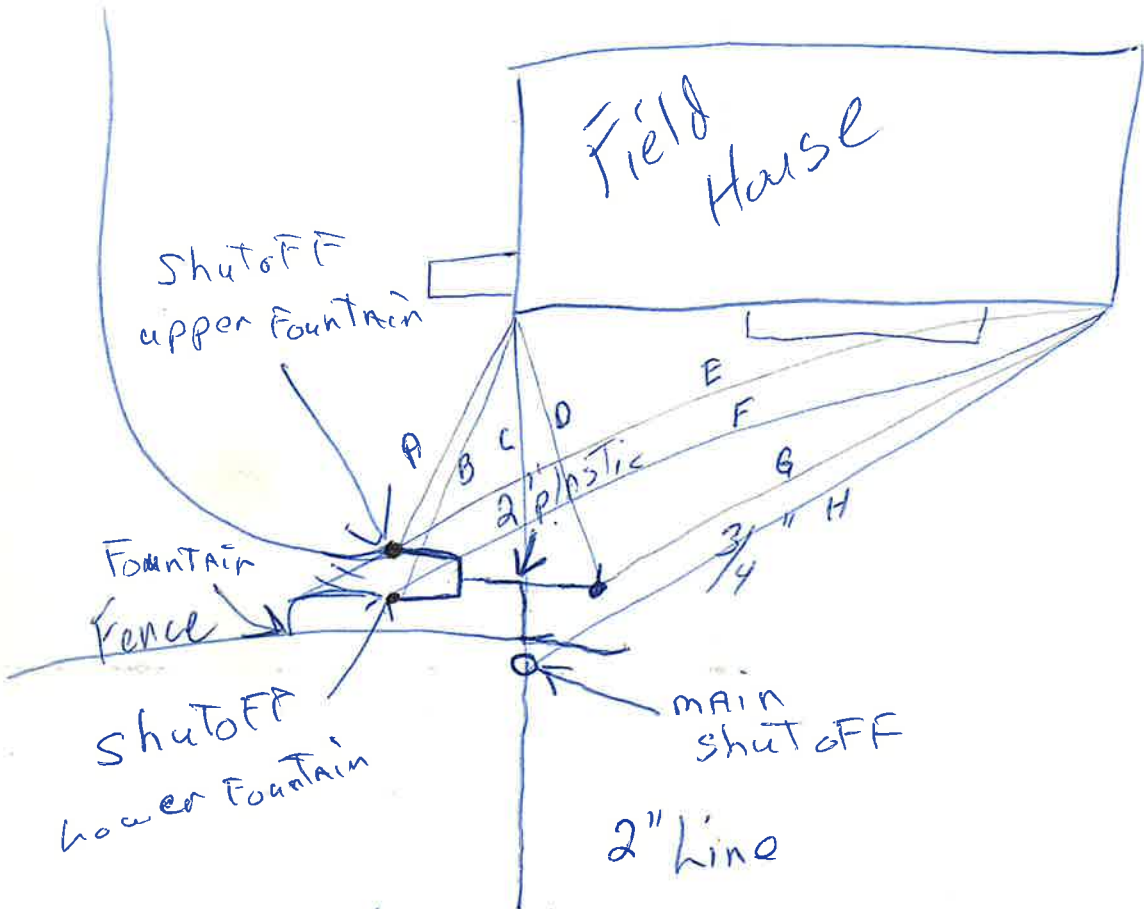
● Curb Box

Departmental Correspondence

To _____ Dept _____

From _____ Dept _____

Subject _____ Date 1990



- A 39'
- B 40'9"
- C 43'9"
- D 38'
- E 44'
- F 45'
- G 65'6"
- H 73'8"

$\frac{3}{4}$ Tee's off to two $\frac{1}{2}$ " lines
with curb stops