

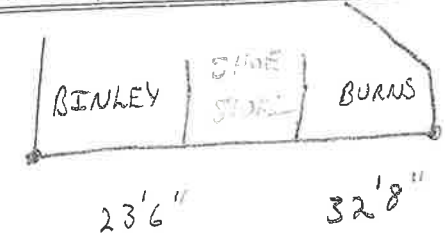
LABOR AND MATERIALS

1	Copper } Connection	1"		\$	
1	Lead } Cock	1"	in.	\$	
1	Curb } Valve	1"	in.	\$	
1				\$	
1	Service box { Short 3-1/2 x 4-1/2			\$	
1	Old returned { Long 4-1/2 x 5-1/2			\$	
10	Ft. 1" in. { Copper			\$	
10				\$	
10				\$	
1	Red'g COUPLINGS 1/2" to 1"			\$	
1	Inc'g			\$	
1	Union			\$	
1	Meter			\$	
1				\$	
1	Compound Joints at			\$	
1	Maintenance Foreman			\$	
1	Hrs. Water Maint. Man - 1 at			\$	
1	Hrs. Water Maint. Man - 2 at			\$	
1	Hrs. Garage Foreman at			\$	
1	Hrs. Labor at			\$	
1	Hrs. Compressor at			\$	
1				\$	
1	Trucking			\$	
1	Pav't Patch			\$	
1				\$	
1				\$	
1				\$	
1				\$	
1				\$	

St. GLEN
 Ave. No. 165-171

Name of Owner
ELKS CLUB

Labor and Mat'l. Report 1929, MAY 22



● Curb Box

12" Main
 Elev. of Main at tap 5 1/2'

Gate at ● ● Gate at

● Curb Box