

LABOR AND MATERIALS

1	Copper Lead	Connection	2"	\$ 23.34
1	Curb	Cock Valve T.S. & V.	2 in.	\$ 21.33
1	Service box - Old returned	Short 3 1/2 x 4 1/2 Long 4 1/2 x 5 1/2 Buff or Rdway		\$ 18.20
10	Ft. 2 in.	Copper Pipe at	1-18" EXT.	\$ 17.70
	Nipples	in. at		\$
	Bushings	to in. at		\$
1	Red'g Inc'g	2" Wheel valve Coupl'gs	to in. at	\$ 21.33
	Union	in. at		\$
	Meter	in. at		\$
	Lead Joints at			\$
	Compound Joints at			\$
10	Maintenance Foreman		1.51	\$ 15.10
	Hrs. Water Maint. Man	1 at		\$
13 1/2	Hrs. Water Maint. Man	2 at	1.24	\$ 16.74
	Hrs. Garage Foreman	at		\$
44	Hrs. Labor	at	1.13	\$ 49.72
	Hrs. Compressor at			\$
	Compensation Ins. at	\$ 4.29 per C.		\$ 3.50
	Trucking			\$ 1.50
	Pav't Patch			\$ 11.20
	Tap by Miller Giffard & Co.		5-4-55	\$
	O'head			\$
				\$ 199.66

189.46

GLEN

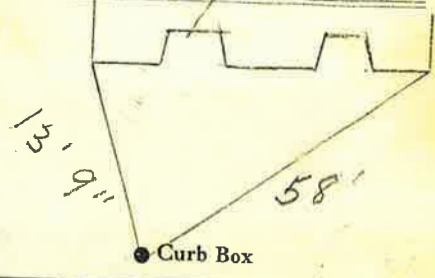
St. 221  
Pl. 229  
Ave. No.

Name of Owner

Y.M.C.A. Bldg.

Labor and Mat'l. Report

May 4 1955



12" Main

Elev. of Main at tap 5 1/2'

Gate at ●

● Gate at

#221 TAX ID # 302.20-30-11

● Curb Box

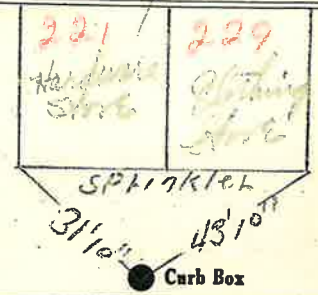
### Labor and Materials

1	Copper	}	Connection	12 X 6"		\$
	Lead					
1	Curb	{	Cock Valve	6"	in	\$
			T.S. & V.			
1	GATE		Service Box	Short 3 1/2 x 4 1/2	}	\$
			Old returned	Long 4 1/2 x 5 1/2		
24'	6"		Buff. or Rdway			
	Ft.	{	Copper		}	\$
	in.		Galv Iron			
			Cast Iron		Pipe at	
	Nipples	in. at				\$
	Bushings	to			in. at	\$
	Red'g	{	Conplings	to	in. at	\$
	Inc'g					
	Union	in. at				\$
	Meter	in. at				\$
	Lead Joints	at				\$
	Leadite Joints	at				\$
	Hrs. Foreman	at				\$
	Hrs. Chauffeur	at				\$
	Hrs. Tapper	at				\$
	Hrs. Labor	at				\$
	Hrs. Labor	at				\$
	Hrs. Compressor	at				\$
	Compensation Ins.					\$
	Trucking					\$
	Builders Use of Water					\$
						\$
						\$
						\$
						\$
						\$

St. 221 227  
 Pl.  
 Ave. No. 147-151

Name of Owner  
YMCA GLEN

Labor and Mat'l. Report 11/21 1921



12 Main Elev. of Main at tap 4 1/2

Gate at ● ● Gate at

● Curb Box