

LABOR AND MATERIALS

M.J. TAPPING

1	Copper Lead	Connection	10" X 6"	\$	Sleeve
1	Curb	Cock Valve	6 in. TAPPING VALVE	\$	M.J. VALVE
1	Service box	Short 3 1/2 x 4 1/2			
	Old returned	Long 4 1/2 x 5 1/2			
		Butt or Rdway		\$	
35	Ft. 6 in.	Copper C.I.	Pipe at	M. J.	\$
	Nipples	in. at		\$	
	Bushings	to in. at		\$	
	Red'g Inc'g	Coupl'gs to in. at		\$	
	Union	in. at		\$	
	Meter	in. at		\$	
2	Lead Joints at	4.50 BENDS		\$	
	Compound Joints at			\$	
	Maintenance Foreman			\$	
	Hrs. Water Maint. Man-1	at		\$	
	Hrs. Water Maint. Man-2	at		\$	
	Hrs. Garage Foreman	at		\$	
	Hrs. Labor	at		\$	
	Hrs. Compressor at			\$	
	Compensation Ins. at \$	per C		\$	
	Trucking	Padding		\$	
	Pav't Patch			\$	
	Tap Made By	Beecher & Co		\$	
	O'head	NOV-1915		\$	

Glen St

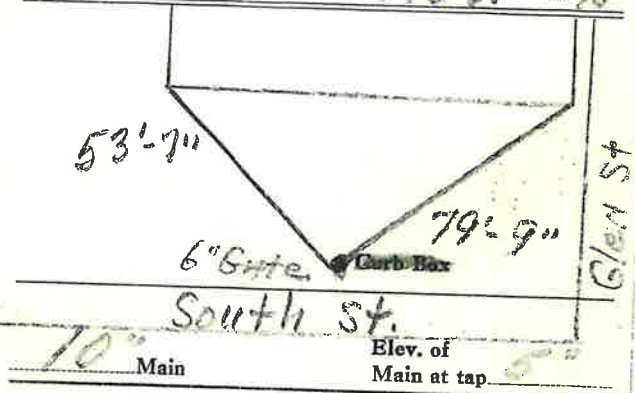
St. No. 274
Ave. No.

Name of Owner

Northway Hotel

Labor and Mat'l. Report

Nov. 1915



Gate at • TAP ON South St • Gate at
New 6" Sprinkler System

