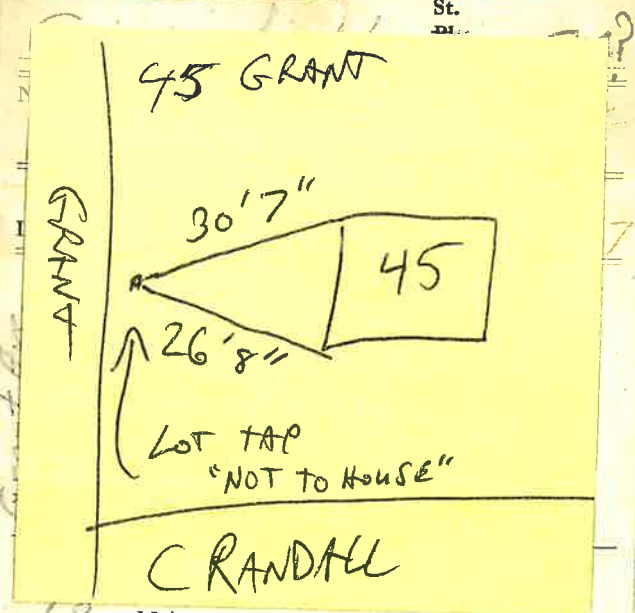


LABOR AND MATERIALS

1	Copper Lead	Connection	3/4"	\$
1	Curb	Cock Valve T.S. & V.	3/4" in.	\$
1	Service box Old returned	Short 3 1/2 x 4 1/2 Long 4 1/2 x 5 1/2 Buff or Rdway		\$
18	Ft. 3/4 in.	Copper G.I. C.I.	Pipe at	\$
	Nipples	in. at		\$
	Bushings	to in. at		\$
	Red'g Inc'g.	Coupl'gs to in. at		\$
	Union	in. at		\$
	Meter	in. at		\$
	Lead Joints at			\$
	Compound Joints at			\$
	Maintenance Foreman			\$
	Hrs. Water Maint. Man	1 at		\$
	Hrs. Water Maint. Man	2 at		\$
	Hrs. Garage Foreman	at		\$
	Hrs. Labor	at		\$
	Hrs. Compressor at			\$
	Compensation Ins. at \$	per C.		\$
	Trucking			\$
	Pav't Patch			\$
	O'head			\$

Grant Ave. # 45



Main Main at tap
Gate at • Gate at •

• Curb Box
This lot Top was used
for 45 Grant Ave
New House

