

## LABOR AND MATERIALS

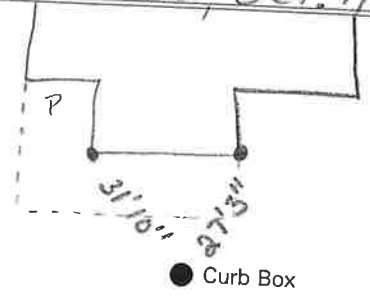
1	Copper	}	Connection	3/4		\$	
	<del>Lead</del>						
1	Curb	}	Cock	3/4	in.	\$	
			Valve				
			T.S. & V.				
1	Service box	{	Short 3-1/2 x 4-1/2			\$	
	Old returned	}	Long 4-1/2 x 5-1/2				
26	Ft.	3/4	in.	{	Copper	}	Pipe at
					Std.		\$
					Std.		
	Nipples		in.			\$	
	Bushings		to		in.	\$	
	Red'g						
	Inc'g						
	Union		in.			\$	
	Meter		in.			\$	
						\$	
	Compound Joints at					\$	
	Maintenance Foreman					\$	
	Hrs. Water Maint. Man - 1 at					\$	
	Hrs. Water Maint. Man - 2 at					\$	
	Hrs. Garage Foreman		at			\$	
	Hrs. Labor		at			\$	
	Hrs. Compressor at					\$	
						\$	
	Trucking					\$	
	Pav't Patch					\$	
						\$	
						\$	
						\$	
						\$	

# GRANT

St. \_\_\_\_\_  
 Pt. \_\_\_\_\_  
 Ave. No. 50

Name of Owner \_\_\_\_\_

Labor and Mat'l. Report 1935, Oct. 11



4" Main

Elev. of Main at tap 4'

Gate at ●

● Gate at

● Curb Box

OLD TAP SHUT OFF AT  
 MAIN