

LABOR AND MATERIALS

1	Copper	} Connection	3/4"	\$ 3.18
1	Lead			
1	Curb	} Cook Valve	3/4 in.	\$ 3.89
1	Service box	} Short 3 1/2 x 4 1/2 Long 4 1/2 x 5 1/2 Buff or Rdway		\$ 4.32
	Old returned			
12	3/4 in.			
	Nipples	in. at		\$
	Bushings	to in. at		\$
	Red'g	} Coupl'gs	to in. at	\$
	Inc'g			
	Union	in. at		\$
	Meter	in. at		\$
	Lead Joints at			\$
	Compound Joints at			\$
3	Maintenance Foreman	1.937		\$ 5.81
	Hrs. Water Maint. Man-1 at			\$
9	Hrs. Water Maint. Man-2 at	1.613		\$ 14.52
13	Hrs. Garage Foreman	1.481		\$ 4.44
13	Hrs. Labor	1.30		\$
	Hrs. Compressor at			\$
	Compensation Ins. at \$ 5686 per C			\$ 1.41
	Trucking			\$ 1.50
	Pav't Patch			\$ 13.50
	Tap by Gifford & Co.			\$
	10-17-56			\$
	O'head			\$
				\$ 57.87

44-37

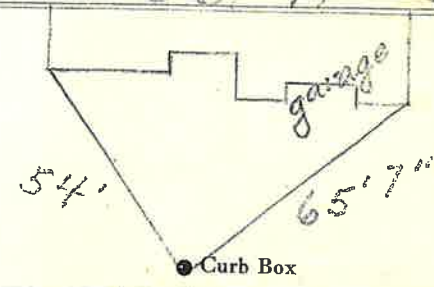
St. Pl. Ave. No. 526

Glen

Name of Owner

Farhart

Labor and Mat'l. Report Oct 17 19 56



Coolidge Ave

6 Main Elev. of Main at tap 5 1/2'

Gate at • Gate at

• Curb Box

This Tap on Coolidge Ave.