

LABOR AND MATERIALS

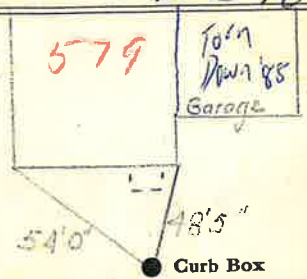
1	Copper Lead	Connection	3/4		\$ 1.31	
1	Curb	Cock Valve T.S. & V.	3/4	in.	\$ 1.75	
1	Service Box Old returned	Short 3 1/2 x 4 1/2 Long 4 1/2 x 5 1/2 Buff. or Rdway			\$ 1.60	
14	Ft.	3/4 in.		Copper Galv Iron Cast Iron	Pipe at 18 \$ 2.52	
	Nipples	in.	at		\$	
	Bushings	to	in.	at	\$	
	Red'g Inc'g	Couplings	to	in.	at	\$
	Union	in.	at		\$	
	Meter	in.	at		\$	
	Lead Joints	at			\$	
	Leadite Joints	at			\$	
	Hrs. Foreman	at			\$	
2	Hrs. Chauffeur	at	@ 62 1/2		\$ 1.25	
8	Hrs. Tapper	at			\$ 5.00	
8	Hrs. Labor	at	45		\$ 3.60	
	Hrs. Labor	at			\$	
3	Hrs. Compressor	at	62 1/2		\$ 1.88	
	Compensation Ins.				\$ 30	
	Trucking				\$ 1 -	
	Builders Use of Water	1/2 Patch Sewer			\$ 4.50	
	Taphy Hessel				\$	
					\$	
					\$	
					\$	
					\$	
					\$	
					\$ 24.71	

1940  
Glens

St. 579  
Pt. Ave. No. 363

Name of Owner  
K Watters

Labor and Mat'l. Report Dec 18 1939



12 Main Elev. of Main at tap 4 1/2  
Gate at ● Gate at ●

● Curb Box

New Tap