

LABOR AND MATERIALS

Copper	}	Connection			\$	
Lead						
Curb	}	Cock Valve T. S. & V.			\$	
Service Box			Short 3 1/2 x 4 1/2 Long 4 1/2 x 5 1/2 Buff. or Rdway			
Old returned						
Ft.	}	}			\$	
		Copper Galv Iron Cast Iron	Pipe at			
Nipples		in. at			\$	
Bushings		to	in. at		\$	
Red'g Inc'g	}	Couplings			\$	
Union		in. at			\$	
Meter		in. at			\$	
Lead Joints		at			\$	
Leadite Joints		at			\$	
Hrs. Foreman		at			\$	
Hrs. Chauffeur		at			\$	
Hrs. Tapper		at			\$	
Hrs. Labor		at			\$	
Hrs. Labor		at			\$	
Hrs. Compressor		at			\$	
Compensation Ins.					\$	
Trucking					\$	
Builders Use of Water					\$	
					\$	
					\$	
					\$	
					\$	
					\$	

St. 41-61
 Pl. _____
 Ave. No. 37

Glen

Name of Owner _____

Labor and Mat'l. Report 19

41-61
 Garage

Foundry

DOOR

11' 6"

34' 5"

● Curb Box

Main Oakland St.

Elev. of
Main at tap

Gate at ●

● Gate at

● Curb Box

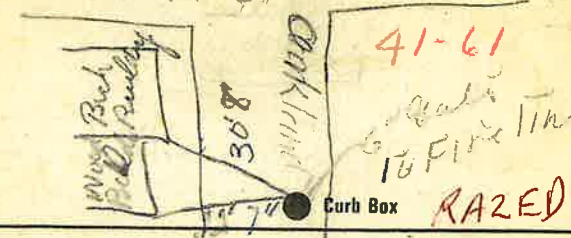
See card for 42
Oakland.

Labor and Materials

Copper } Connection.....	\$	
Lead }	\$	
1 Curb } Cock } .. 6" in.	\$ 42.25	
1 Service Box } Short 3x4 1/2 } Gate box \$ 5.60		
Old returned } Long 4x5 1/2 }		
1 6 Ft. 6" } Copper } Pipe at 65 \$ 10.40		
1 Nipples 6" } Galv. Iron } in-at. 90.00 \$ 7.77		
Bushings..... to..... in. at.....	\$	
Red'g } Couplings..... to..... in. at.....	\$	
Inc'g }	\$	
Union..... in. at.....	\$	
Meter..... in. at.....	\$	
Lbs. Br. Stone at.....	\$	
Lbs. Sand at.....	\$	
Bags Cement 'at.....	\$	
Paving Brick } Mack } at.....	\$	
4 Lead Joints at P.P.s 1.52 \$ 9.12		
2 Leadite Joints at Sleeve \$		
47 Hrs. Foreman at 6 2/3 \$ 26.25		
14 Hrs. Common Labor at Tapper @ .50 \$ 7.-		
79 Hrs. Common Labor at 45 \$ 35.55		
Hrs. Mason at.....	\$	
Hrs. Mason's Helper at.....	\$	
11 Hrs. Compressor at 20 \$ 22.00		
Compensation Ins.....	\$ 72.09	
Trucking.....	\$ 5.-	
Builders' Use of Water Patch \$ 50.-		
Total \$		223.13

37-41 Glen St 41-61 30-44
 Labor and Material Report July 19 1930

Allen Appliances Co Oakland Glen
 Glen St



6" Main Elev of Main at tap 4 1/2
 Gate at ● ● Gate at

● Curb Box

41-61
 10 Fire Trk
 RAZED