

LABOR AND MATERIALS

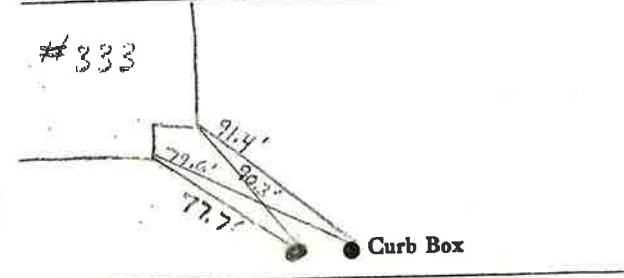
Copper } Connection _____	\$ _____
Lead } _____	
Curb } Cock Valve } _____ in. _____	\$ _____
} T. S. & V. } _____	
Service box } Short 3½ x 4½ } _____	
Old returned } Long 4½ x 5½ } _____	\$ _____
Ft. _____ in. } Copper } Pipe at _____	\$ _____
} G. I. } _____	
} C. I. } _____	
Nipples _____ in. at _____	\$ _____
Bushings _____ to _____ in. at _____	\$ _____
Red'g } _____	
Inc'g } Coupl'gs _____ to _____ in. at _____	\$ _____
Union _____ in. at _____	\$ _____
Meter _____ in. at _____	\$ _____
_____	\$ _____
Compound Joints at _____	\$ _____
Maintenance Foreman _____	\$ _____
Hrs. Water Maint. Man—1 at _____	\$ _____
Hrs. Water Maint. Man—2 at _____	\$ _____
Hrs. Garage Foreman _____ at _____	\$ _____
Hrs. Labor— _____ at _____	\$ _____
Hrs. Compressor at _____	\$ _____
_____	\$ _____
Trucking _____	\$ _____
Pav't Patch _____	\$ _____
_____	\$ _____
_____	\$ _____
_____	\$ _____
_____	\$ _____

St. _____
~~Pl.~~ _____
 Ave. No. 333

GLEN

Name of Owner
CONTINENTAL INSUR.

Labor and Mat'l. Report 1973



	Elev. of
Main	Main at tap _____
Gate at ● _____	● Gate at _____

● Curb Box

TWO TAPS - ONE FOR 8" + ONE
 FOR 4" - 8" FIRE LINE
 + 4" DOMESTIC

LSM-5C-6-1-67

(This has been shot off at curb)

Aug-16-1972

MEASUREMENTS FOR 1" CURB STOP AT # 341
GLEN ST - CURB BOX REMOVED. THIS TAP HAS BEEN
DISCONTINUED - TO BE DUG UP AT MAIN. IN FRONT OF
NEW INSURANCE BLDG.

MUELLER
HYDRANT

Light Pole

CURB STOP

Light Pole

THURMAN
MOT PNT
HYDRANT



103'

49' 2"

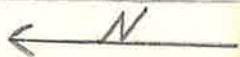
40' 6"



134'



GLEN ST



PINE
ST