

LABOR AND MATERIALS

1	Copper	{	Connection	3/4"		\$
	Lead					
1	Curb	{	Cock Valve	3/4 in.		\$
			T. S. & V.			
X	Service box	{	Short 3 1/2 x 4 1/2			
	Old returned		Long 4 1/2 x 5 1/2			
			Buff or Rdway			\$
30	Ft.	3/4 in.	Copper	Pipe at		\$
			G. I.			
			C. I.			
	Nipples	in. at				\$
	Bushings	to in. at				\$
	Red'g	{	Coupl'gs	to in. at		\$
	Inc'g					
	Union	in. at				\$
	Meter	in. at				\$
	Lead Joints	at				\$
	Compound Joints	at				\$
	Hrs. Water Maint. Man	— 1 at				\$
	Hrs. Water Maint. Man	— 2 at				\$
	Hrs. Labor	— at				\$
	Hrs. Labor	— at				\$
	Hrs. Compressor	at				\$
	Compensation Ins.	at \$ per C.				\$
	Trucking					\$
	Pav't Patch					\$
	Tap by Giggard					\$
	Co. 3-15-61					\$
	O'head					\$

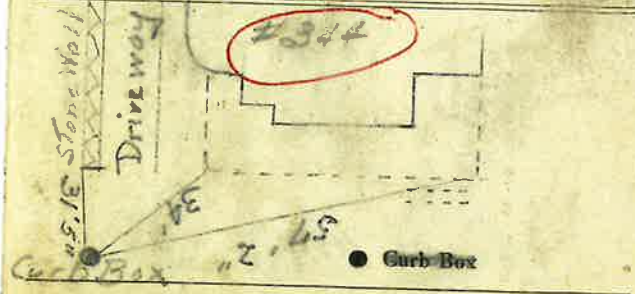
344

Glen

St. _____
-Pl- _____
Ave. No. 218

Name of Owner: GLEN ROSE Weaver Lodge

Labor and Mat'l. Report Mar. 15 19



12" Main Elev. of Main at tap 5 1/2'

Gate at ● Gate at ●

● Curb Box