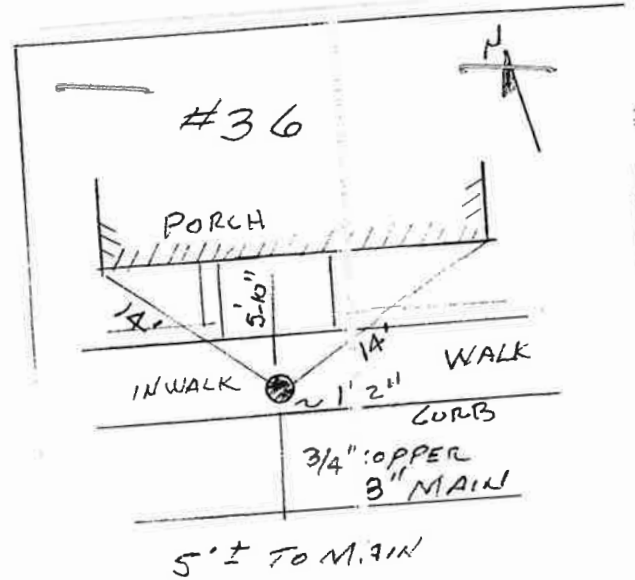


## LABOR AND MATERIALS

1	Copper lead	} Connection	3/4		\$	
1	Curb	} Cock Valve T.S. & V.	3/4 in.		\$	
1	Service box	{ Short 3-1/2 x 4-1/2 Old returned Long 4-1/2 x 5-1/2 }			\$	
6	Ft. 3/4 in. Copper		} Pipe at		\$	
	Nipples		in. at		\$	
	Bushings		to in. at		\$	
	Red'g					
	Inc'g					
	Union		in. at		\$	
	Meter		in. at		\$	
					\$	
	Compound Joints at				\$	
	Maintenance Foreman				\$	
	Hrs. Water Maint. Man - 1 at				\$	
	Hrs. Water Maint. Man - 2 at				\$	
	Hrs. Garage Foreman		at		\$	
	Hrs. Labor		at		\$	
	Hrs. Compressor at				\$	
					\$	
	Trucking				\$	
	Pav't Patch				\$	
					\$	
					\$	
					\$	
					\$	
					\$	



Eleva. to tap 5.5'

TAX ID # 302.20-6-36

SEP 2006  
\* SUPPLY TO HOUSE GALV.