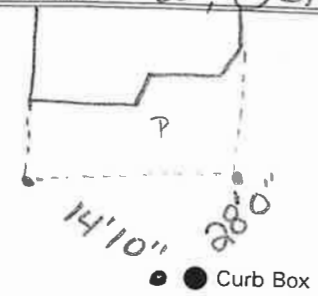


LABOR AND MATERIALS

1	Copper	Connection	3/4	\$
1	Curb	Cock Valve	3/4 in.	\$
1	Service box	Short 3-1/2 x 4-1/2		\$
	Old returned	Long 4-1/2 x 5-1/2		\$
10	Ft.	Copper Pipe	3/4 in.	\$
	Nipples		in. at	\$
	Bushings		to in. at	\$
	Red'g			\$
	Inc'g			\$
	Union		in. at	\$
	Meter		in. at	\$
	Compound Joints		at	\$
	Maintenance Foreman			\$
	Hrs. Water Maint. Man - 1		at	\$
	Hrs. Water Maint. Man - 2		at	\$
	Hrs. Garage Foreman		at	\$
	Hrs. Labor		at	\$
	Hrs. Compressor		at	\$
	Trucking			\$
	Pav't Patch			\$

GRANT St. Ave. No. 53
 Name of Owner

Labor and Mat'l. Report 1935, Oct. 10



4" Main Elev. of Main at tap 4'
 Gate at ● Gate at ●

TAX ID # 302.19-10-9

● Curb Box

OLD TAP SHUT OFF AT MAIN
 OUTSIDE CLEANOUT
 LOCATED NEXT TO
 CURB BOX 6-3-2014