

LABOR AND MATERIALS

1	Copper Lead	Connection	3/4"	\$
1	Curb	Cock Valve T.S. & V.	3/4" in.	\$
1	Service box	Short 3 1/2 x 4 1/2		
	Old returned	Long 4 1/2 x 5 1/2		
		Buff or Rdway		\$
14	Ft. 3/4 in.	Copper G.I. G.I.	Pipe at	\$
	Nipples	in. at		\$
	Bushings	to in. at		\$
	Red'g Inc'g	Coupl'gs to in. at		\$
	Union	in. at		\$
	Meter	in. at		\$
	Lead Joints	at		\$
	Compound Joints	at		\$
	Maintenance Foreman			\$
	Hrs. Water Maint. Man	1 at		\$
	Hrs. Water Maint. Man	2 at		\$
	Hrs. Garage Foreman	at		\$
	Hrs. Labor	at		\$
	Hrs. Compressor	at		\$
	Compensation Ins.	at \$ per C		\$
	Trucking			\$
	Pav't Patch			\$
	Tap by Gissard			\$
	Tap Co.			\$
		6-24-60.		\$
	O'head			\$

Lot Tap

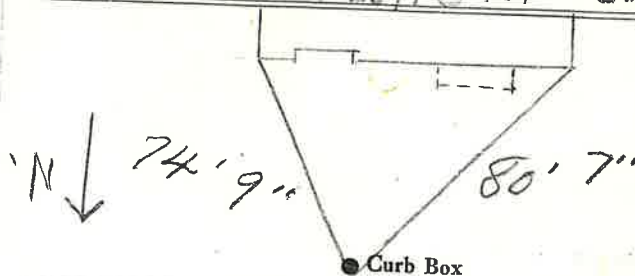
Halsey

St. Pl.

Ave. No. 6

Name of Owner

Labor and Mat'l. Report June 24 1960.



6" Main

Elev. of Main at tap 5

Gate at ●

● Gate at

● Curb Box

This Lot Tap For #6
Measured From
#5 Halsey Pl.