

LABOR AND MATERIALS

Copper	}	Connection	-----	\$
Lead			-----	\$
Curb	}	Cock Valve T. S. & V.	----- in.	\$
Service Box			-----	\$
Old returned	}	Short 3 1/2 x 4 1/2	-----	\$
		Long 4 1/2 x 5 1/2		
		Buff. or Rdway		
Ft. -----	}	Copper	Pipe at -----	\$
in. -----		Galv Iron		
		Cast Iron		
Nipples -----	in. at -----	\$		
Bushings -----	to ----- in. at -----	\$		
Red'g Inc'g	}	Couplings ----- to ----- in. at -----	\$	
			\$	
Union -----	in. at -----	\$		
Meter -----	in. at -----	\$		
Lead Joints at -----	\$			
Leadite Joints at -----	\$			
Hrs. Foreman at -----	\$			
Hrs. Chauffeur at -----	\$			
Hrs. Tapper at -----	\$			
Hrs. Labor at -----	\$			
Hrs. Labor at -----	\$			
Hrs. Compressor at -----	\$			
Compensation Ins. -----	\$			
Trucking -----	\$			
Builders Use of Water -----	\$			
	\$			
	\$			
	\$			
	\$			

St. 7
 Pl. 7
 Ave. No. 7

Harlem

Name of Owner _____

Labor and Mat'l. Report Aug. 21 19 39

This curb box removed 11-5-70 By Peck & Dunyer.

9

2 Curb boxes

30'

North of

Buffalo

● Curb Box

● Main

Elev. of Main at tap -----

Gate at ● ● Gate at

old 9 curb box.

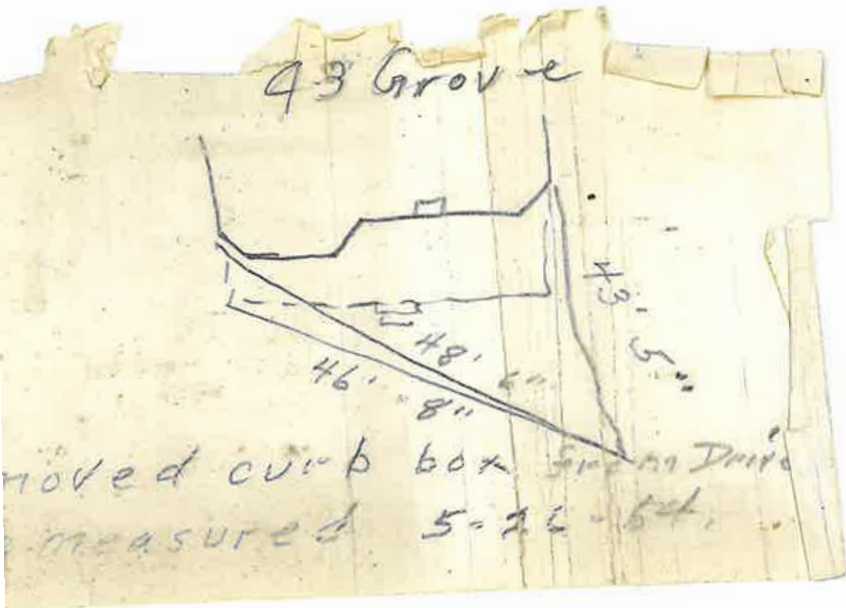
88'

Hydt. corner Harlem + Washington Str.

● Curb Box

● Main

Gate at ● ● Gate at



Now being
Used by
Glens Falls Ins,
Co.
Parking lot
Hyatt

Moved curb box from a driveway
Re measured 5-26-64