

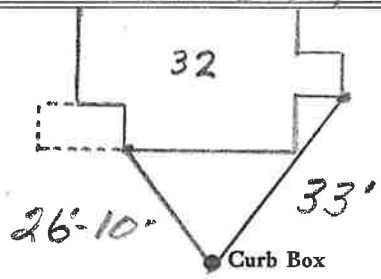
LABOR AND MATERIALS

1 Copper } Connection 3/4" \$  
 Lead }  
 1 Curb } Cock } 3/4 in. ORIGINAL \$  
 Valve }  
 T. S. & V. }  
 1 Service box } Short 3 1/2 x 4 1/2 }  
 Old returned } Long 4 1/2 x 5 1/2 }  
 Buff or Railway } \$  
 26 Ft. 3/4 in. } Copper } Pipe at \$  
 Gal. }  
 Gal. }  
 Nipples in. at \$  
 Bushings to in. at \$  
 Red'g }  
 Inc'g } Coupl'gs to in. at \$  
 Union in. at \$  
 Meter in. at \$  
 Lead Joints at \$  
 Compound Joints at \$  
 Maintenance Foreman \$  
 Hrs. Water Maint. Man-1 at \$  
 Hrs. Water Maint. Man-2 at \$  
 Hrs. Garage Foreman at \$  
 Hrs. Labor at \$  
 Hrs. Compressor at \$  
 Compensation Ins. at \$ per C \$  
 Trucking \$  
 Pav't Patch \$  
 TAP BY St John + Co \$  
 June-29-1976 \$  
 O'head \$

HARRISON St. Ave. No. 32

Name of Owner FRANCIS O'Keefe

Labor and Mat'l. Report JUNE 29 1976



4" Main Elev. of Main at tap 4 1/2'-5'

Gate at • Gate at

• Curb Box