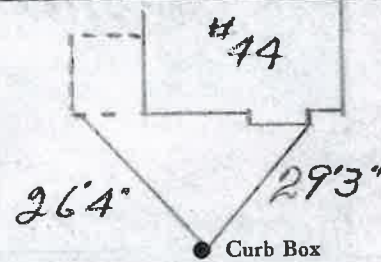


LABOR AND MATERIALS

1	Copper	{ Connection	3/4	\$	2.29
	Lead				
1	Curb	{ Cock Valve	3/4 in.	\$	2.70
		{ T. S. & V.			
	Service box	{ Short 3 1/2 x 4 1/2			
	Old returned	{ Long 4 1/2 x 5 1/2			
		{ Buff or Rdway	Same	\$	—
29	Ft. 3/4 in.	{ Copper			
		{ C.I.			
		{ Pipe at	35	\$	10.15
	Nipples	in. at		\$	
	Bushings	to in. at		\$	
	Red'g Inc'g	{ Coupl'gs to in. at		\$	
	Union	in. at		\$	
	Meter	in. at		\$	
	Lead Joints at			\$	
	Compound Joints at			\$	
1	Hrs. Water Maint. Man—1 at			\$	1.12
	Hrs. Water Maint. Man—2 at			\$	
6	Hrs. Labor— at	91		\$	5.46
	Hrs. Labor— at			\$	
	Hrs. Compressor at			\$	
	Compensation Ins. at \$		per C.	\$	1.15
	Trucking			\$	1.00
	Pav't Patch	B.P.		\$	
		Tap by Miller		\$	
				\$	
				\$	
				\$	
	O'head			\$	
				\$	22.87

Harrison  
 Ave. No. 44  
 Name of Owner  
 George Kokoletsos  
 Labor and Mat'l. Report June 20 1950



4 Main Elev. of Main at tap 4 1/2  
 Gate at • Gate at

• Curb Box

LSM-SC 10-21-49 To be Billed