

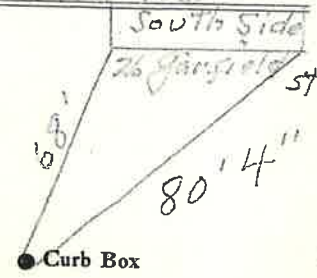
LABOR AND MATERIALS

| | | | | | |
|----|-----------------------|--|-------------------|--|----|
| 1 | Copper Lead | Connection | $\frac{3}{4}$ " | | \$ |
| 1 | Curb | Cock Valve | $\frac{3}{4}$ in. | | \$ |
| | | T.S. & V. | | | |
| 1 | Service box | Short $3\frac{1}{2} \times 4\frac{1}{2}$ | | | |
| | Old returned | Long $4\frac{1}{2} \times 5\frac{1}{2}$ | | | |
| | | Buff or Rdway | | | \$ |
| 17 | Ft. $\frac{3}{4}$ in. | Copper | | | |
| | | G.I. | | | |
| | | G.I. | | | |
| | | Pipe at | | | \$ |
| | Nipples | in. at | | | \$ |
| | Bushings | to in. at | | | \$ |
| | Red'g | Coupl'gs | to in. at | | \$ |
| | Inc'g | | | | |
| | Union | in. at | | | \$ |
| | Meter | in. at | | | \$ |
| | Lead Joints | at | | | \$ |
| | Compound Joints | at | | | \$ |
| | Maintenance Foreman | | | | \$ |
| | Hrs. Water Maint. Man | 1 at | | | \$ |
| | Hrs. Water Maint. Man | 2 at | | | \$ |
| | Hrs. Garage Foreman | at | | | \$ |
| | Hrs. Labor | at | | | \$ |
| | Hrs. Compressor | at | | | \$ |
| | Compensation Ins. | at \$ per C | | | \$ |
| | Trucking | | | | \$ |
| | Pav't Patch | | | | \$ |
| | Tap by Gifford & Co. | | | | \$ |
| | | | | | \$ |
| | | | | | \$ |
| | O'head | | | | \$ |
| | | | | | \$ |

St. _____
Pl. _____ 56-58
Ave. No. _____

Name of Owner
H. Jones

Labor and Mat'l. Report June 26 1956



6" Main Elev. of Main at tap 5'

Gate at ● ● Gate at

● Curb Box

Measured from South Side 26 Garfield St.

Lot Tap

