

Labor and Materials		
1	Lead Connection ^{3/4}	\$
1	Curb Cock ^{3/4}	\$
1	Service Box { Short 3 1/2 x 4 } Old-returned { Long 4 1/2 x 5 1/2 } Buffalo	\$
23	Ft. 3/4 in. G. I. Pipe at ^{Cup}	\$
	Nipples in. at	\$
	Bushings to in. at	\$
	Red'g Coup to in. at	\$
	Ine'g Coup to in. at	\$
	Union in. at	\$
	Meter in. at	\$
	Cu. Yds. Br. Stone at	\$
	Cu. Yds. Sand at	\$
	Bags Cement at	\$
	Paving Brick { Mack Red Asphalt } at	\$
2	Hrs. Foreman at	\$
1.2	Hrs. Common Labor at	\$
	Hrs. Mason at	\$
	Hrs.	\$
	Hrs.	\$
9.25	Builders' Use of Water	\$
	Truck 100	\$
	New old house	\$
	Total	\$

Labor and Material Report June 27 1925

See Plan of H. Hart of the Ave. 3/4 Tap

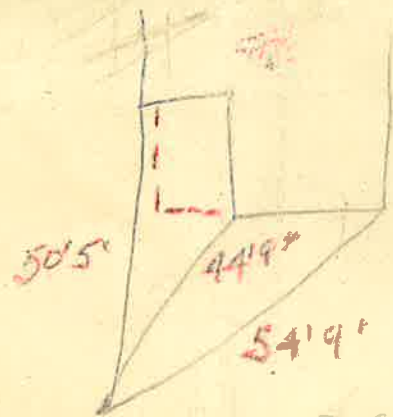
4" Main

Elev. of Main at tap ^{4 1/2}

Gate at ● Gate at ●

● Curb Box

William Reynolds

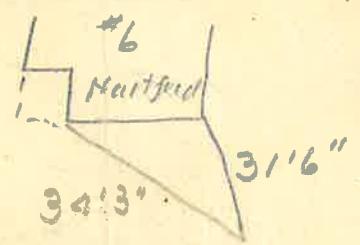


Measurement for
#6 Hartford Ave



36'2"
By 9m10

Geo Moulton Doug



20 feet 3/4 in

47' 11"

75' 11"

Hodford

1841