

LABOR AND MATERIALS

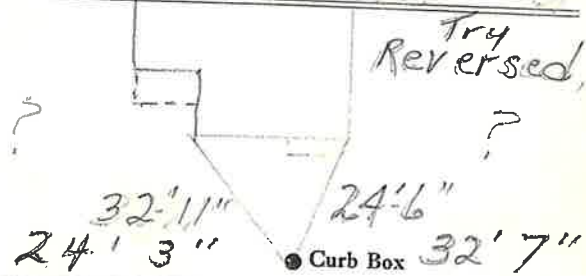
1	Copper	Connection	3/2"	\$	
1	Lead	Cock	3/2"	\$	
1	Curb	Valve	in.	\$	
		T. S. & V.		\$	
Some	Service box	Short 3 1/2 x 4 1/2		\$	
	Old returned	Long 4 1/2 x 5 1/2		\$	
		Buff or Rdway		\$	
11	Ft.	3/4 in.	Copper	Pipe at	\$
			G. I.		\$
			C. I.		\$
	Nipples	in.	at	\$	
	Bushings	to	in.	at	\$
	Red'g	Coupl'gs.	to	in.	at
	Inc'g				\$
	Union	in.	at	\$	
	Meter	in.	at	\$	
	Lead Joints	at		\$	
	Compound Joints	at		\$	
	Maintenance Foreman			\$	
	Hrs. Water Maint. Man	1	at	\$	
	Hrs. Water Maint. Man	2	at	\$	
	Hrs. Garage Foreman		at	\$	
	Hrs. Labor		at	\$	
	Hrs. Compressor		at	\$	
	Compensation Ins.	at \$	per C	\$	
	Trucking			\$	
	Pay't Patch			\$	
	Tap by G. J. Ford & Co.			\$	
	Oct 24 61			\$	
	O'head			\$	

St. Pl. Ave. No. 9

Name of Owner

Labor and Mat'l. Report

19



6" Main

Elev. of Main at tap

Gate at

Gate at

● Curb Box

Old Disconnected
at main Oct 24 61

by G. J. Ford & Co.