

LABOR AND MATERIALS

1	Copper Lead	Connection	3/4	\$	1.79
1	Curb	Clock Valve T. S. & V.	3/4 in.	\$	2.61
1	Service box Old returned	Short 3 3/4 X 4 3/4 Long 4 3/4 X 5 3/4 Buff or Rdway		\$	1.82
14	Ft.	Copper Galv. Iron Cast Iron	Pipe at	23	\$ 3.22
	Nipples	in. at		\$	
	Bushings	to in. at		\$	
	Red'g Inc'g	Couplings	to in. at	\$	
	Union	in. at		\$	
	Meter	in. at		\$	
	Lead Joints	at		\$	
	Compound Joints	at		\$	
2	Hrs. Foreman	at W.U.M.	9 1/2	\$	1.85
7	Hrs. Chauffeur	at	8 1/2	\$	5.78
	Hrs. Tapper	at		\$	
14	Hrs. Labor	at	7 1/2	\$	10.01
	Hrs. Labor	at		\$	
	Hrs. Compressor	at		\$	
	Compensation Ins.			\$	49
	Trucking			\$	1.00
	Builders Use of Water			\$	5.00
Tapped by Warsinski				\$	
				\$	
				\$	
				\$	
				\$	
				\$	
				\$	
				\$	23.59

80-46

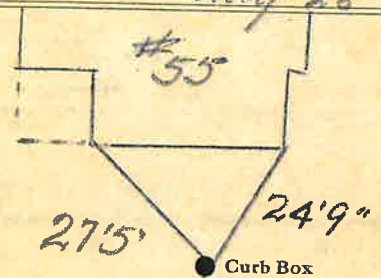
Haskell

St. Pl.
Ave. No. 55

Name of Owner

Leone

Labor and Mat'l. Report Aug 28 1946



6" Main

Elev. of Main at tap 4'

Gate at ●

● Gate at

● Curb Box