

LABOR AND MATERIALS

|    |                            |                       |              |          |
|----|----------------------------|-----------------------|--------------|----------|
| 1  | Copper                     | { Connection          | 2"           | \$ 27.14 |
| 1  | Lead                       | { Cock                |              |          |
| 1  | Curb                       | { Valve               | 2 in.        | \$ 22.99 |
|    |                            | { F.S. & V.           |              |          |
| ✓  | Service box                | { Short 3 1/2 x 4 1/2 |              |          |
|    | Old returned               | { Long 4 1/2 x 5 1/2  |              |          |
|    |                            | { Buff or Rdway       | 2"           | \$ 11.22 |
| 11 | Ft. 2 in.                  | { Copper              | Pipe at 1.02 | \$ 11.22 |
|    |                            | { G.I.                |              |          |
|    |                            | { G.I.                |              |          |
|    | Nipples                    | in. at                |              | \$       |
|    | Bushings                   | to in. at             |              | \$       |
|    | Red'g                      | { Coupl'gs            | to in. at    | \$       |
|    | Inc'g                      |                       |              | \$       |
|    | Union                      | in. at                |              | \$       |
|    | Meter                      | in. at                |              | \$       |
|    | Lead Joints at             |                       |              | \$       |
|    | Compound Joints at         |                       |              | \$       |
|    | Hrs. Water Maint. Man—1 at |                       |              | \$       |
|    | Hrs. Water Maint. Man—2 at |                       |              | \$       |
|    | Hrs. Labor—                | at                    |              | \$       |
|    | Hrs. Labor—                | at                    |              | \$       |
|    | Hrs. Compressor at         |                       |              | \$       |
|    | Compensation Ins. at \$    | per C.                |              | \$       |
|    | Trucking                   |                       |              | \$       |
|    | Pav't Patch                |                       |              | \$       |
|    |                            |                       |              | \$       |
|    |                            |                       |              | \$       |
|    |                            |                       |              | \$       |
|    | O'head                     |                       |              | \$       |

Tap by Warsinski  
5-24-51  
Billed  
61.35

141-1951

Haskell

St.  
Pl.  
Ave. No.

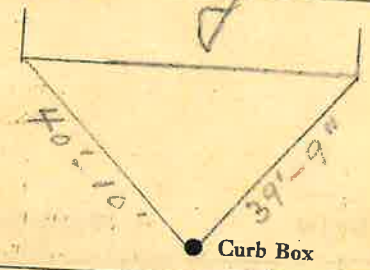
Name of Owner

East Play Ground

Labor and Mat'l. Report

May 24

1951



● Curb Box

Haskell Ave

6" Main

Elev. of Main at tap

6'

● Gate at

● Gate at

● Curb Box

2" Tap for bath house.

LABOR AND MATERIALS

|                         |                               |  |       |    |
|-------------------------|-------------------------------|--|-------|----|
| Copper                  | } Connection                  | _____  | \$    |    |
| Lead                    |                               | _____  | \$    |    |
| Curb                    | } Cock<br>Valve<br>T. S. & V. | _____ in.  | \$    |    |
|                         |                               | } Short 3½ x 4½<br>Long 4½ x 5½<br>Buff or Rdway | _____ | \$ |
|                         |                               |  | _____ | \$ |
| Service box             | } {                           | _____  | \$    |    |
| Old returned            |                               | _____  | \$    |    |
| Ft.                     | } { Copper<br>G. I.<br>C. I.  | _____ in.  | \$    |    |
| Nipples                 |                               | _____ in.  | \$    |    |
| Bushings                |                               | _____ to _____ in.                               | \$    |    |
| Red'g                   | } Coupl'gs                    | _____ to _____ in.                               | \$    |    |
| Inc'g                   |                               | _____ to _____ in.                               | \$    |    |
| Union                   | _____ in.                     | \$   |       |    |
| Meter                   | _____ in.                     | \$   |       |    |
| Lead Joints             | _____ at                      | \$   |       |    |
| Compound Joints         | _____ at                      | \$   |       |    |
| Maintenance Foreman     | _____ at                      | \$   |       |    |
| Hrs. Water Maint. Man—1 | _____ at                      | \$   |       |    |
| Hrs. Water Maint. Man—2 | _____ at                      | \$   |       |    |
| Hrs. Garage Foreman     | _____ at                      | \$   |       |    |
| Hrs. Labor—             | _____ at                      | \$   |       |    |
| Hrs. Compressor         | _____ at                      | \$   |       |    |
| Compensation Ins.       | at \$ _____ per C             | \$   |       |    |
| Trucking                | _____                         | \$   |       |    |
| Pav't Patch             | _____                         | \$   |       |    |
| O'head                  | _____                         | \$   |       |    |

Haskell

St.  
Pl.  
Ave. No.

Name of Owner City of Glen Falls

East Play Grounds

Labor and Mat'l. Report

June 13 1958



1 1/2" 5"  
2" Mains

Elev. of Main at tap 5'

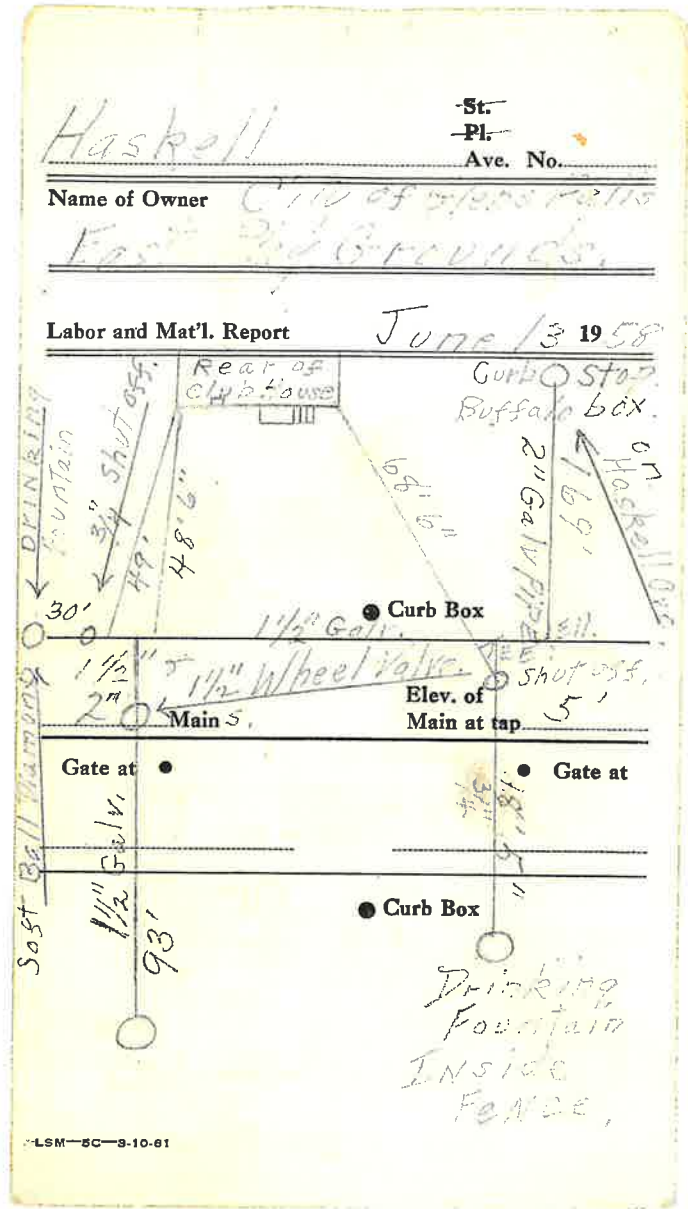
Gate at ●

● Gate at

● Curb Box

### LABOR AND MATERIALS

|                          |  |           |    |  |
|--------------------------|--|-----------|----|--|
| Copper Lead              | Connection   |           | \$ |  |
| Curb                     | Cock Valve T. S. & V.                                      | } in.     | \$ |  |
|                          |  |           |    |  |
| Service box Old returned | Short 3 1/2 x 4 1/2<br>Long 4 1/2 x 5 1/2<br>Buff or Rdway | }         | \$ |  |
|                          |  |           |    |  |
|                          |  |           |    |  |
| Ft. in.                  | Copper<br>G. I.<br>C. I.                                   | } Pipe at | \$ |  |
|                          |  |           |    |  |
|                          |  |           |    |  |
| Nipples                  | in. at   |           | \$ |  |
| Bushings                 | to in. at  |           | \$ |  |
| Red'g<br>Inc'g           | Coupl'gs   | to in. at | \$ |  |
|                          |  |           |    |  |
| Union                    | in. at   |           | \$ |  |
| Meter                    | in. at   |           | \$ |  |
| Lead Joints              | at   |           | \$ |  |
| Compound Joints          | at   |           | \$ |  |
| Maintenance Foreman      |  |           | \$ |  |
| Hrs. Water Maint. Man-1  | at   |           | \$ |  |
| Hrs. Water Maint. Man-2  | at   |           | \$ |  |
| Hrs. Garage Foreman      | at   |           | \$ |  |
| Hrs. Labor               | at   |           | \$ |  |
| Hrs. Compressor          | at   |           | \$ |  |
| Compensation Ins.        | at \$ per C  |           | \$ |  |
| Trucking                 |  |           | \$ |  |
| Pav't Patch              |  |           | \$ |  |
|                          |  |           | \$ |  |
|                          |  |           | \$ |  |
| O'head                   |  |           | \$ |  |
|                          |  |           | \$ |  |



LABOR AND MATERIALS

Copper } Connection \_\_\_\_\_ \$  
 Lead }  
 1 Curb } Cock Valve } 2 in. ORISEAL \$  
           } T.S. & V. }  
 Service box { Short 3 1/2 x 4 1/2 }  
 Old returned { Long 4 1/2 x 5 1/2 } \_\_\_\_\_ \$  
                   { Buff or Rdway }  
 ? Ft. 2" in. { Copper } Pipe at ALL NEW \$  
                   { Galv. } FROM CURB BOX  
 Nipples \_\_\_\_\_ in. at TO END OF PIPES \$  
 Bushings \_\_\_\_\_ to \_\_\_\_\_ in. at \$  
 Red'g } Coupl'gs. \_\_\_\_\_ to \_\_\_\_\_ in. at \$  
 Inc'g }  
 Union \_\_\_\_\_ in. at \$  
 Meter \_\_\_\_\_ in. at \$  
 Lead Joints at \$  
 Compound Joints at \$  
 Maintenance Foreman \$  
 Hrs. Water Maint. Man-1 at \$  
 Hrs. Water Maint. Man-2 at \$  
 Hrs. Garage Foreman \_\_\_\_\_ at \$  
 Hrs. Labor \_\_\_\_\_ at \$  
 Hrs. Compressor at \$  
 Compensation Ins. at \$ \_\_\_\_\_ per C \$  
 Trucking \$  
 Pav't Patch \$  
 \_\_\_\_\_ \$  
 \_\_\_\_\_ \$  
 BY LAREAU & Co 7-8-70 \$  
 O'head \_\_\_\_\_ \$

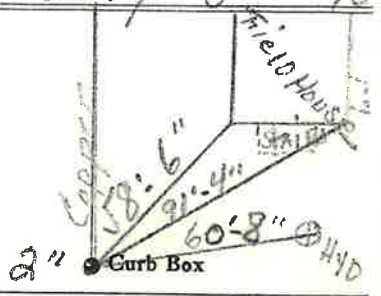
MATERIALS FURNISHED  
 BY REC. COMM.

Haskell

St. \_\_\_\_\_  
 Pl. \_\_\_\_\_  
 Ave. No. \_\_\_\_\_

Name of Owner City of HONOLULU  
 East Play Grounds

Labor and Mat'l. Report July 8 1970



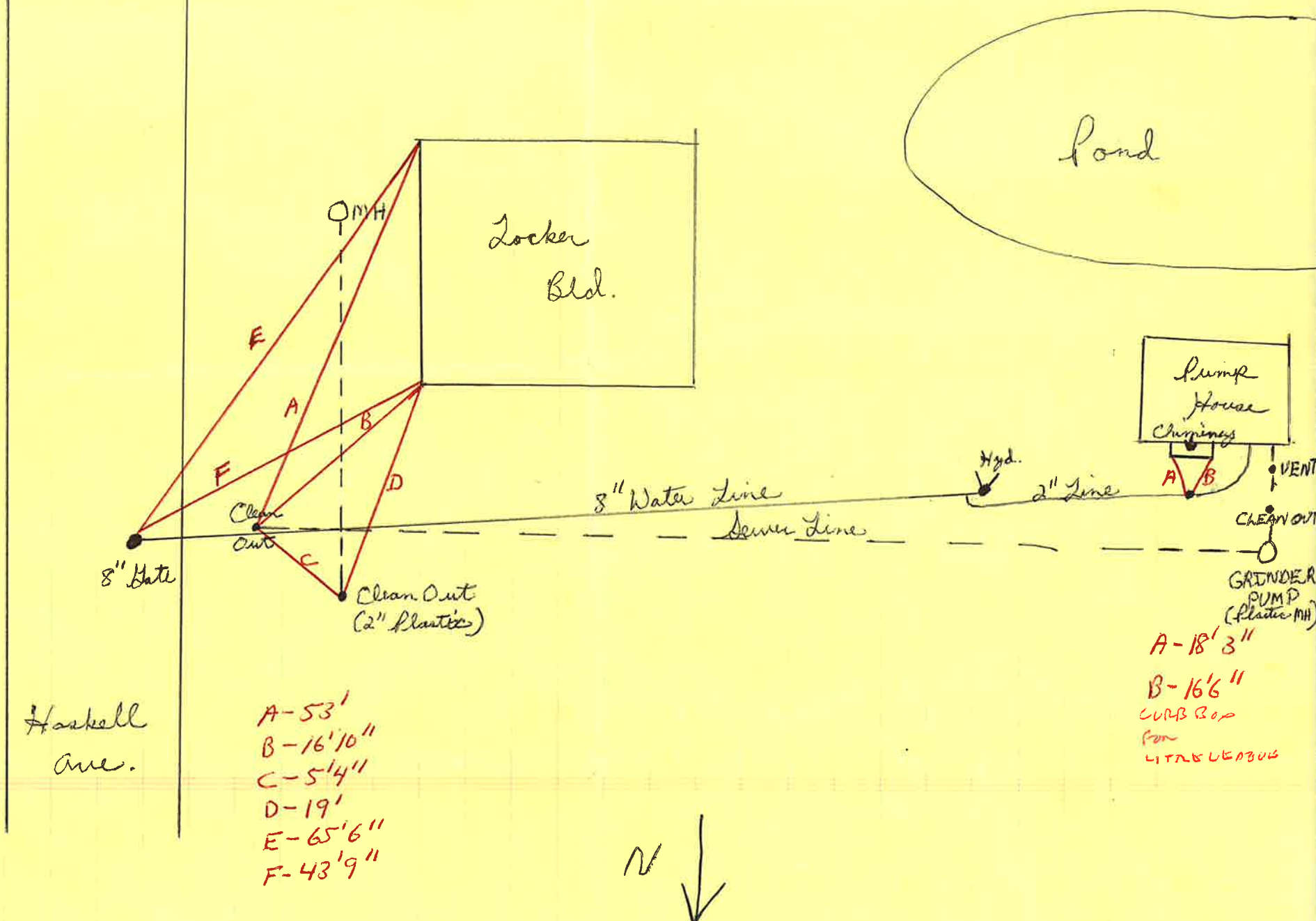
Haskell Ave

Main \_\_\_\_\_ Elev. of Main at tap \_\_\_\_\_  
 Gate at • \_\_\_\_\_ Gate at \_\_\_\_\_

• Curb Box



# East Field - 1988



Haskell Ave.

8" Gate

Clean Out

Clean Out (2" Plastic)

Locker Bld.

8" Water Line

Sewer Line

Hyd.

2" Line

Pump House  
Chimneys

CLEAN OUT

GRINDER PUMP (Plastic MH)

Pond

- A-53'
- B-16'10"
- C-5'4"
- D-19'
- E-65'6"
- F-43'9"

A-18'3"  
B-16'6"  
CURB Box  
FOR  
LITRELEBUS

