

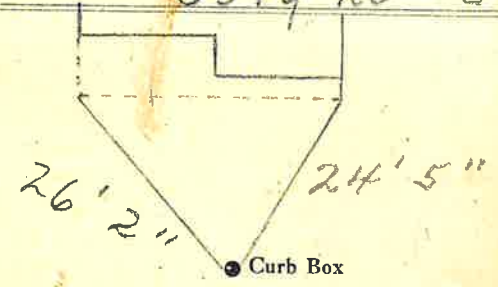
LABOR AND MATERIALS

1	Copper	Connection	3/4"	\$	3.08
1	Lead	Cock	3/4"	\$	3.89
1	Curb	Valve	3/4"	\$	
		T.S. & V.		\$	
1	Service box	Short 3 1/2 x 4 1/2		\$	4.32
	Old returned	Long 4 1/2 x 5 1/2		\$	
		Buff or Rdway		\$	
25	Ft. 3/4 in.	Copper	Pipe at 45	\$	11.25
		C.I.		\$	
		C.I.		\$	
	Nipples	in. at		\$	
	Bushings	to in. at		\$	
	Red'g			\$	
	Inc'g	Coupl'gs to in. at		\$	
	Union	in. at		\$	
	Meter	in. at		\$	
	Lead Joints	at		\$	
	Compound Joints	at		\$	
	Maintenance Foreman			\$	
	Hrs. Water Maint. Man-1	at		\$	
6	Hrs. Water Maint. Man-2	at 1.613		\$	9.68
3	Hrs. Garage Foreman	at 1.20		\$	3.90
18	Hrs. Labor	at 1.00		\$	19.10
	Hrs. Compressor	at		\$	
	Compensation Ins. at \$	5.646 per C		\$	1.80
	Trucking			\$	1.50
	Pav't Patch			\$	7.20
	Tap by Gifford & Co.			\$	
		7-20-56		\$	
	O'head			\$	
				\$	67.62

St. Haviland  
 Pl. 30  
 Ave. No. 30

Name of Owner SKROMME

Labor and Mat'l. Report July 20 1956



4" Main Elev. of Main at tap 5'  
 Gate at • Gate at

• Curb Box