

LABOR AND MATERIALS

1	Copper	} Connection	1"	\$
	Lead			
1	Curb	} Cock Valve	1 in.	\$
			T.S. & V.	
1	Service box	} Short 3 1/2 x 4 1/2 Long 4 1/2 x 5 1/2 Buff or Rdway		\$
	Old returned			
33	Ft. 1 in.	} Copper C.I. C.I.	Pipe at	\$
	Nipples	in. at		\$
	Bushings	to in. at		\$
	Red'g	} Coupl'gs	to in. at	\$
	Inc'g			
	Union	in. at		\$
	Meter	in. at		\$
	Lead Joints	at		\$
	Compound Joints	at		\$
	Maintenance Foreman			\$
	Hrs. Water Maint. Man	1 at		\$
	Hrs. Water Maint. Man	2 at		\$
	Hrs. Garage Foreman	at		\$
	Hrs. Labor	at		\$
	Hrs. Compressor	at		\$
	Compensation Ins.	at \$ per C		\$
	Trucking			\$
	Pav't Patch			\$
				\$
				\$
	O'head			\$
				\$

Tap by *Lareau & Co.*
3-13-70

St.
Pl.
Ave. No.

Henry

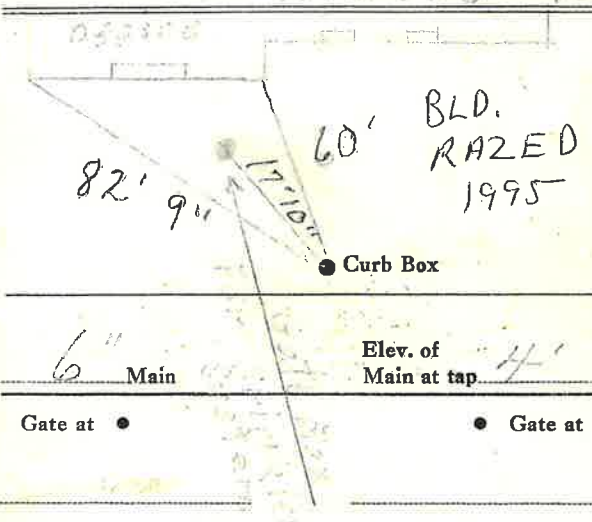
Name of Owner

Walter

First Street & ...

Labor and Mat'l. Report

Mar. 13 1970



6" Main Elev. of Main at tap *4'*
Gate at • Gate at

• Curb Box
1" SERVICE + 6" SERVICE
SHUT OFF AT MAIN
1995