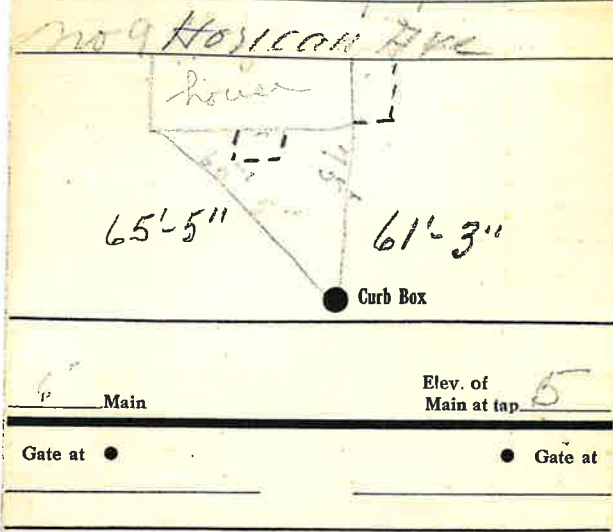


271

Labor and Materials

1	Copper } Connection. $3\frac{1}{4}$	\$ 1.48
1	Lead } Connection. $3\frac{1}{4}$	\$ 1.79
1	Curb { Cock Valve T.S.&V. } $3\frac{1}{4}$ in	\$ 1.30
1	Service Box { Short $3\frac{1}{2} \times 4\frac{1}{2}$ Long $4\frac{1}{2} \times 5\frac{1}{2}$ } Old returned { Buff. or Ridway }	\$ 1.62
9	Ft. in. { Copper Galv. Iron Cast Iron } Pipe at	\$
	Nipples in. at	\$
	Bushings to in. at	\$
	Red'g Inc'g { Couplings to in. at	\$
	Union in. at	\$
	Meter in. at	\$
	Lbs. Br. Stone at	\$
	Lbs. Sand at	\$
	Bags Cement at	\$
	Paving Brick { Mack Red Asphalt } at	\$
	Lead Joints at	\$
	Leadite Joints at	\$
3	Hrs. Foreman at	\$ 1.88
	Hrs. Common Labor at	\$
4	Hrs. Common Labor at 45	\$ 1.80
	Hrs. Mason at	\$
	Hrs. Masons Helper at	\$
	Hrs. Compressor at	\$
	Compensation Ins	\$ 1.75
	Trucking	\$ 1.00
	Builders Use of Water $Patch$	\$ 5.00
Total \$		15.99



● Curb Box

old connection
 shut off at main

11