

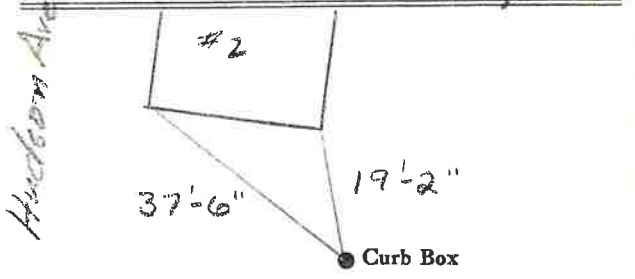
LABOR AND MATERIALS

1	Copper	} Connection	<u>3/4</u>	\$
	Lead			
1	Curb	} <u>2/4</u> in.		\$
			Cock Valve	
			T.S. & V.	
1	Service box	} <u>Short 3 1/2 x 4 1/2</u>		\$
	Old returned		<u>Long 4 1/2 x 5 1/2</u>	
			<u>Buff or Rdway</u>	
18	Ft. <u>3/4</u> in.	} Pipe at		\$
			Copper	
			G.I.	
	Nipples	in. at		\$
	Bushings	to in. at		\$
	Red'g Inc'g	Coupl'gs to in. at		\$
	Union	in. at		\$
	Meter	in. at		\$
	Lead Joints	at		\$
	Compound Joints	at		\$
	Maintenance Foreman			\$
	Hrs. Water Maint. Man	1 at		\$
	Hrs. Water Maint. Man	2 at		\$
	Hrs. Garage Foreman	at		\$
	Hrs. Labor	at		\$
	Hrs. Compressor	at		\$
	Compensation Ins.	at \$ per C		\$
	Trucking			\$
	Pay't Patch			\$
	<u>Tap by Rec-Lot Co.</u>			\$
	<u>June 8, 1977</u>			\$
	O'head			\$

Hudson ~~St~~ Ave. No. 2

Name of Owner
Dog Shack Inc.

Labor and Mat'l. Report June 8, 1977



6 Main Elev. of Main at tap 5'

Gate at • Gate at •

• Curb Box

✓ OK