

Curb Box ● CLEANOUT

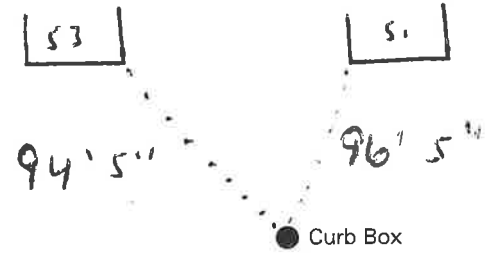
Gate at ● Gate at ●
Main Main
Elev. of Main at tap



St. Hudson
Pl. Ave. No. 53
Name of Owner
Labor and Mat'l. Report 19

Hudson St. Pl. Ave. No. 53

Name of Owner
Labor and Mat'l. Report 19



Main Elev. of Main at tap
Gate at ● Gate at ●

CLEANOUT ● Curb Box

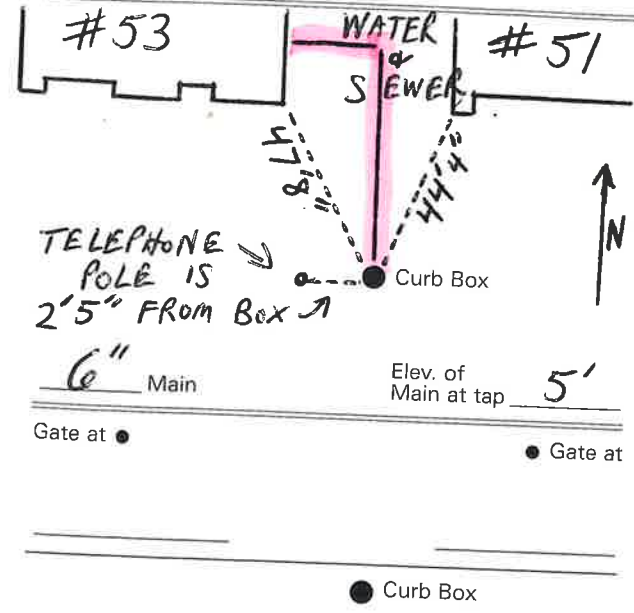


LABOR AND MATERIALS

1	Copper	Connection	3/4"	\$	
1	Lead	Cock	ORISEAL	\$	
1	Curb	Valve	3/4 in.	\$	
		F.S. & v.			
1	Service box	Short 3-1/2 x 4-1/2		\$	
	Old returned	Long 1-1/2 x 3-1/2		\$	
10	Ft.	3/4 in. Copper	Pipe at	\$	
		Ct.			
		Ct.			
	Nipples	in. at		\$	
	Bushings	to in. at		\$	
	Red'g				
	Inc'g				
	Union	in. at		\$	
	Meter	in. at		\$	
				\$	
	Compound Joints at			\$	
	Maintenance Foreman			\$	
	Hrs. Water Maint. Man - 1 at			\$	
	Hrs. Water Maint. Man - 2 at			\$	
	Hrs. Garage Foreman	at		\$	
	Hrs. Labor	at		\$	
	Hrs. Compressor at			\$	
				\$	
	Trucking			\$	
	Pav't Patch			\$	
				\$	
				\$	
				\$	
				\$	
				\$	

HUDSON St. No. 53
 Ave. No. 53
 Name of Owner
GLENS FALLS PRINTING

Labor and Mat'l. Report 19



TIES -
 MEASURED ON 5-21-2001

Labor and Materials

... Copper } Connection.....	96
... Lead }	
... Curb { Cock Valve }	1.33
... Service Box { Short 3 1/2 x 4 1/2 }	1.35
... Old returned { Long 4 1/2 x 5 1/2 }	
... { Buff. or Rawex }	
... 10 Ft. in. { Copper Galv. Iron } Pipe at 15	1.50
... { Cast Iron }	
... Nipples in. at	\$
... Bushings to in. at	\$
... Red'g } Couplings..... to in. at	\$
... Inc'g }	
... Union..... in. at	\$
... Meter..... in. at	\$
... Lbs. Br. Stone at	\$
... Lbs. Sand at	\$
... Bags Cement at	\$
... Paving Brick { Mack Red Asphalt } at	\$
... Lead Joints at	\$
... Leadite Joints at	\$
... 5 Hrs. Foreman at (2 1/2)	3.13
... 13 Hrs. Common Labor at	5.95
... Hrs. Common Labor at	\$
... Hrs. Mason at	\$
... Hrs. Masons Helper at	\$
... Hrs. Compressor at	\$
... Compensation Ins	28
... Trucking	1-
... Builders Use of Water <i>no patch</i>	\$ -

Total \$15.40.

Labor and Material Report

Aug 20 1936

41 Hudson Ave



House Tap
Razed

6 Main

Elev of Main at tap 50

Gate at ●

● Gate at

● Curb Box

old shut off
shut off at curb
8-24-1936

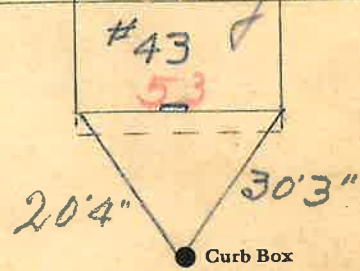
M

LABOR AND MATERIALS

1 Copper Connection $\frac{3}{4}$ " \$
 1 Lead *oriseal* $\frac{3}{4}$ in. \$
 1 Curb Clock Valve $\frac{3}{4}$ in. \$
 1 Service box Short $3\frac{1}{2} \times 4\frac{1}{2}$ \$
 Old returned Long $4\frac{1}{2} \times 6\frac{1}{2}$ \$
 Buffer Rdway \$
 10 Ft. $\frac{3}{4}$ in. Copper Pipe at \$
 Galv. Iron
 Cast Iron
 Nipples in. at \$
 Bushings to in. at \$
 Red'g } Couplings to in. at \$
 Inc'g }
 Union in. at \$
 Meter in. at \$
 Lead Joints at \$
 Compound Joints at \$
 Hrs. Foreman at \$
 Hrs. Chauffeur at \$
 Hrs. Tapper at \$
 Hrs. Labor at \$
 Hrs. Labor at \$
 Hrs. Compressor at \$
 Compensation Ins. \$
 Trucking \$
 Builders Use of Water \$
Renewal Tap made \$
By Gifford Co \$
July 14-66 \$
 \$
 \$

NEED NEW TIES - 1996

Hudson Ave. Ave. No. 43
 Name of Owner *3/4" Renewal Tap*
Fred Howard
 Gordon's Welding July 14 1966
 Labor and Mat'l. Report



6" Main Elev. of Main at tap 5'
 Gate at ● Gate at ●

Curb Box in Driveway

