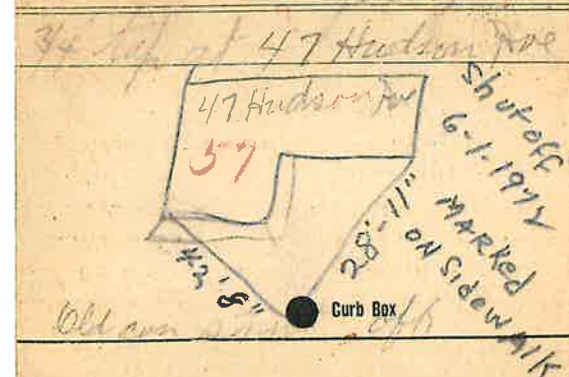


Labor and Materials

1	Lead Connection ^{3/4}	\$
1	Curb Cock ^{3/4}	\$
	Service Box { Short 3 1/2 x 4 1/2 Old returned { Long 4 1/2 x 5 1/2 Buffalo	\$
10	Ft. ^{3/4} in. C. I. Pipe at ^{Copper}	\$
	Nipples..... in. at.....	\$
1	Bushings ^{3/4} to ^{1/2} in. at.....	\$
	Red'g Coup..... to..... in. at.....	\$
	Inc'g Coup..... to..... in. at.....	\$
	Union..... in. at.....	\$
	Meter..... in. at.....	\$
	Cu. Yds. Br. Stone at.....	\$
	Cu. Yds. Sand at.....	\$
	Bags Cement at.....	\$
	Paving Brick { Mack Red Asphalt } at.....	\$
4	Hrs. Foreman at.....	\$
9	Hrs. Common Labor at.....	\$
	Hrs. Mason at.....	\$
	Hrs..... at.....	\$
	Hrs..... at.....	\$
No	Builders' Use of Water.....	\$
	Trucks I. O. O.....	\$
 at.....	\$
 at.....	\$
 at.....	\$
	Total	\$ 13.72

57 Labor and Material Report June 19 1915



6 Main Elev. of Main at tap 5.11
Gate at ● Gate at ●

● Curb Box

To Be Disconnected
AT MAIN