

LABOR AND MATERIALS

Copper	Lead	Connection	3/4		\$ 2.87
✓ Curb	Cock Valve		3/4 in.		\$ 3.67
	T. S. & V.				
✓ Service box	Old returned	Short 3/2 X 4 1/2			\$ 4.68
		Long 4 1/2 X 5 1/2			
		Buf or Rdway			
9 Ft. 3/4 in.		Copper	Pipe at	37	\$ 2.88
		G. I.			
		C. I.			
Nipples	in. at				\$
Bushings	to in. at				\$
Red'g					\$
Inc'g	Coupl'gs to in. at				\$
Union	in. at				\$
Meter	in. at				\$
Lead Joints	at				\$
Compound Joints	at				\$
Hrs. Water Maint. Man-1	at				\$
3 Hrs. Water Maint. Man-2	at	1.02			\$ 3.06
Hrs. Labor-	at	91			\$ 91
Hrs. Labor-	at				\$
Hrs. Compressor	at				\$
Compensation Ins.	at \$ 2.18 per C.				\$.09
Trucking					\$ 2.02
Pav't Patch					\$
Tap by Reg. Man					\$
O'head					\$ 20.11

98

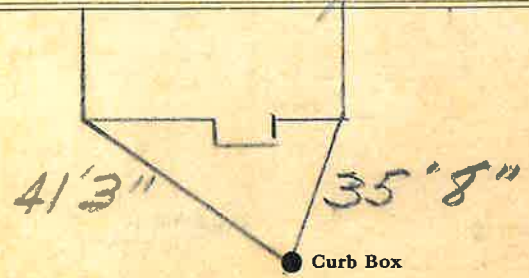
St.
Pl. Hunter
Ave. No. 155

Name of Owner

Ball

Labor and Mat'l. Report

Sept 13 1947



6 Main

Elev. of
Main at tap 4

Gate at ●

● Gate at

● Curb Box