

1935

Labor and Materials

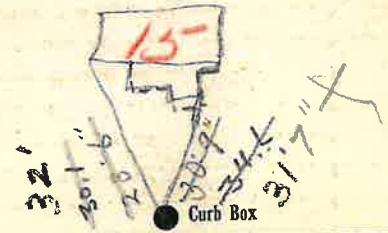
1	Copper } Connection $3/4$	\$ 1.25
	Lead }	
1	Curb { Cock Valve T.S.&V. } $3/4$ in	\$ 1.70
7	Service Box { Short $3\frac{1}{2} \times 4\frac{1}{2}$ Long $4\frac{1}{2} \times 5\frac{1}{2}$ } <i>Old box used</i>	
	Old returned { Buff, or Rdway }	
13	Ft. $3/4$ in. { Copper Galv. Iron Cast Iron } Pipe at $12\frac{1}{2}$ x \$	1.76
	Nipples in. at	\$
1	Bushings $3/4$ to $1/2$ in. at	\$.05
	Red'g Inc'g } Couplings to in. at	\$
	Union in. at	\$
	Meter in. at	\$
	Lbs. Br. Stone at	\$
	Lbs. Sand at	\$
	Bags Cement at	\$
	Paving Brick { Mack Red Asphalt } at	\$
	Lead Joints at	\$
	Leadite Joints at	\$
5	Hrs. Foreman at 62.12	\$ 3.13
1	Hrs. Common Labor at 50	\$.50
5	Hrs. Common Labor at 45	\$ 2.25
	Hrs. Mason at	\$
	Hrs. Masons Helper at	\$
	Hrs. Compressor at	\$
	Compensation Ins	\$ 22
	Trucking	\$ $1-$
	Builders Use of Water	\$

Total \$ 11.76.

1935-36

Labor and Material Report *Apr 11*

1930

3/4 tap at 13 Hunter at $1/2$ " MainElev. of Main at tap $4\frac{1}{2}$

Gate at ●

● Gate at

● Curb Box

*Old tap shut off at main**OKS**MM*

11