

Labor and Materials

1	Copper	Connection $\frac{3}{4}$ "	\$ 1.25
1	Lead		
1	Curb	{ Cock Valve T.S.&V. } $\frac{3}{4}$ " in	\$ 1.70
1	Service Box	{ Short $3\frac{1}{2} \times 4\frac{1}{2}$ Long $4\frac{1}{2} \times 5\frac{1}{2}$ Old returned Buff. or Rdway. }	\$ 1.45
9	Ft. $\frac{3}{4}$ "	{ Copper Galv. Iron Cast Iron } Pipe at $13\frac{1}{2}$ "	\$ 1.72
	Nipples	in. at	\$
	Bushings	to in. at	\$
	Red'g Inc'g	{ Couplings to in. at	\$
	Union	in. at	\$
	Meter	in. at	\$
	Lbs. Br. Stone	at	\$
	Lbs. Sand	at	\$
	Bags Cement	at	\$
	Paving Brick	{ Mack Red Asphalt } at	\$
	Lead Joints	at	\$
	Leadite Joints	at	\$
5	Hrs. Foreman	at $62\frac{1}{2}$ "	\$ 3.13
1	Hrs. Common Labor	at 50 "	\$.50
5	Hrs. Common Labor	at 45 "	\$ 2.25
	Hrs. Mason	at	\$
	Hrs. Masons Helper	at	\$
	Hrs. Compressor	at	\$
	Compensation Ins		\$.27
	Trucking		\$ 1.00
	Builders Use of Water		\$

Total \$ 12.62

1935-46

33

Labor and Material Report

Apr 17

1935

$\frac{3}{4}$ " tap at 29 Hunter st



Curb Box

12" Main

Elev. of Main at tap $4\frac{1}{2}$

Gate at ●

● Gate at

● Curb Box

Old tap shut off at main

[Handwritten signature]

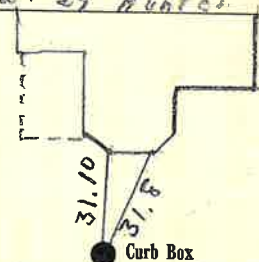
Labor and Materials

1	Copper } Connection... ^{3/4} "	\$.....
1	Lead }	\$.....
1	Curb { Cock Valve T.S.&V. } ^{3/4} in	\$.....
1	Service Box { Short 3 1/2 x 4 1/2 }	\$.....
	Old returned { Long 4 1/2 x 5 1/2 }	\$.....
	{ Buff. or Raway }	\$.....
9	Ft. ^{3/4} in. { Copper Galv. Iron Cast Iron } Pipe at	\$.....
	Nipples in. at	\$.....
	Bushings to in. at	\$.....
	Red'g } Couplings to in. at	\$.....
	Inc'g }	\$.....
	Union in. at	\$.....
	Meter in. at	\$.....
	Lbs. Br. Stone at	\$.....
	Lbs. Sand at	\$.....
	Bags Cement at	\$.....
	Paving Brick { Mack Red Asphalt } at	\$.....
	Lead Joints at	\$.....
	Leadite Joints at	\$.....
	Hrs. Foreman at	\$.....
	Hrs. Common Labor at	\$.....
	Hrs. Common Labor at	\$.....
	Hrs. Mason at	\$.....
	Hrs. Masons Helper at	\$.....
	Hrs. Compressor at	\$.....
	Compensation Ins	\$.....
	Trucking	\$.....
	Buildlers Use of Water	\$.....
	Total \$.....	

Labor and Material Report Aug 29 1935

3/4" tap at 29 Hunter St.

33



4" Main

Elev of Main at tap 4 1/2

Gate at ●

● Gate at

● Curb Box