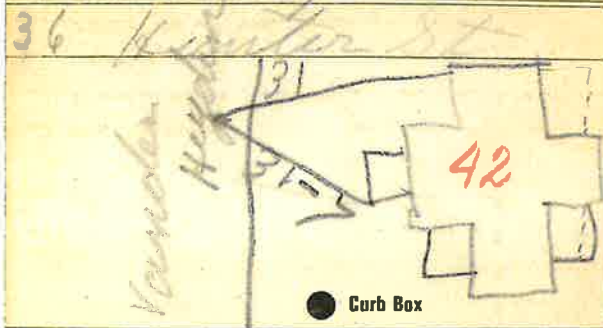


Labor and Materials

Copper } Connection.....	3	320
Lead }	4	
Curb } Cock }	3	100
} Valve }	in.	
} T. S. & V. }	in.	
Service Box } Short 3' x 4' }		140
Old returned } Long 4' x 5' }		
} Buil. or Rdway }		
25 Ft. } L } in. } Copper } Pipe at.....	4	550
} 1/4 }		
} Galv. Iron }		
} Cast Iron }		
Nipples.....	in. at.....	\$.....
Bushings.....	to..... in. at.....	\$.....
Red'g } Couplings.....	to..... in. at.....	\$.....
Inc'g }		
Union.....	in. at.....	\$.....
Meter.....	in. at.....	\$.....
Lbs. Br. Stone at.....		\$.....
Lbs. Sand at.....		\$.....
Bags Cement at.....		\$.....
Paving Brick } Mack } at.....		\$.....
} Red }		
} Asphalt }		
Lead Joints at.....		\$.....
Leadite Joints at.....		\$.....
3 Hrs. Foreman at.....		1.87
16 Hrs. Common Labor at.....		6.50
Hrs. Common Labor at.....		\$.....
Hrs. Mason at.....		\$.....
Hrs. Mason's Helper at.....		\$.....
Hrs. Compressor at.....		\$.....
Compensation Ins.....		22
1 Trucking.....		1.80
Builders' Use of Water.....		\$.....
Total		2069

Labor and Material Report

42
June 20 1927



Hunter St

Main Elev. of Main at tap 5

Gate at ● Gate at ●

● Curb Box

Y expected on from
Vanderhook St