

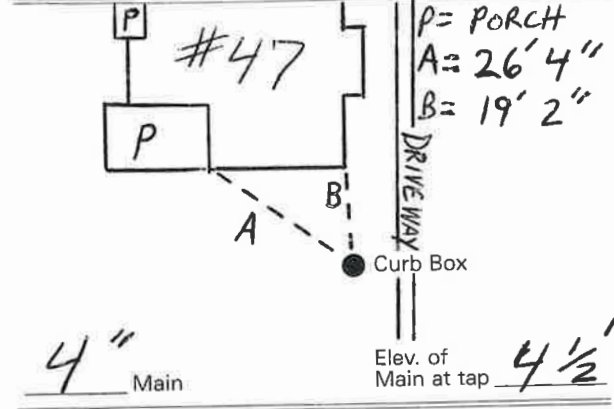
LABOR AND MATERIALS

1	Copper Lead } Connection	3/4"	\$
1	Curb } Cock Valve } F.G. & V. }	3/4" in.	\$
1	Service box Old returned	Short 2-1/2 x 4-1/2 Long 4-1/2 x 5-1/2	\$
11	Ft. 3/4 in. Copper Pipe at		\$
	Nipples	in. at	\$
	Bushings	to in. at	\$
	Red'g		
	Inc'g		
	Union	in. at	\$
	Meter	in. at	\$
	Compound Joints at		\$
	Maintenance Foreman		\$
1	Hrs. Water Maint. Man - 1 at	\$.50	\$.50
5	Hrs. Water Maint. Man - 2 at	\$.45	\$ 2.25
5	Hrs. Garage Foreman at	\$.625	\$ 3.13
	Hrs. Labor	at	\$
	Hrs. Compressor at		\$
	Trucking		\$
	Pav't Patch		\$
			\$
			\$
			\$
			\$
			\$

HUNTER St. Pt. Ave. No. 47

Name of Owner CHARLES WHITE

Labor and Mat'l. Report 1935



Gate at ● Gate at ●

TAX ID # 302.16-16-5

ORIGINAL TAP INSTALLED
APRIL 25TH, 1935.

Labor and Materials

1	Copper	Connection	3/4	\$	1.25
1	Curb	Cock Valve	3/4 in	\$	1.70
1	Service Box	Old returned	Short 3 1/2 x 4 1/2 Long 4 1/2 x 5 1/2 Buff. or Edwax	\$	1.45
11	Ft.	3/4 in.	Copper Galv. Iron Cast Iron	Pipe at	13 1/2 \$ 1.49
	Nipples			in. at	\$
	Bushings			to in. at	\$
	Red'g Inc'g	Couplings		to in. at	\$
	Union			in. at	\$
	Meter			in. at	\$
	Lbs. Br. Stone	at			\$
	Lbs. Sand	at			\$
	Bags Cement	at			\$
	Paving Brick	Mack Red Asphalt		at	\$
	Lead Joints	at			\$
	Leadite Joints	at			\$
5	Hrs. Foreman	at	6 2/3	\$	3.13
1	Hrs. Common Labor	at		\$.50
5	Hrs. Common Labor	at	45	\$	2.25
	Hrs. Mason	at		\$	
	Hrs. Masons Helper	at		\$	
	Hrs. Compressor	at		\$	
	Compensation Ins			\$.22
	Trucking			\$	1.00
	Builders Use of Water			\$	

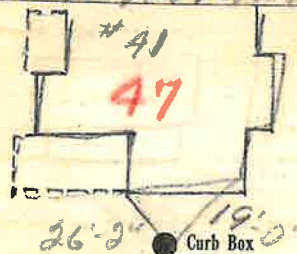
Total \$ 12.99

1935-54

47

Labor and Material Report Oct 25 1935

3/4 top of 41 Hunter St



4 Main

Elev. of Main at tap 4 1/2

Gate at ●

● Gate at

● Curb Box

old shut off at Main

M