

### Labor and Materials

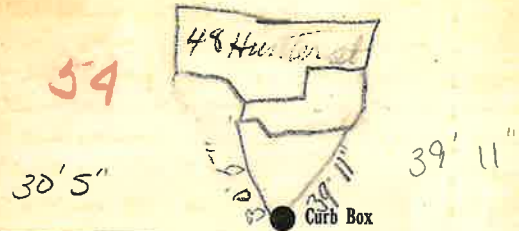
1	Copper	Connection	3/4	\$1.25
1	Lead			
1	Curb	Cock Valve	3/4	\$1.70
		F.S.&V.		
1	Service Box	Short 3 1/2 x 4 1/2		\$1.37
	Old returned	Long 4 1/2 x 5 1/2		
		Bull or Bawey		
2 1/2	Ft. 3/4 in.	Copper Galv. Iron Cast Iron	Pipe at	\$2.84
	Nipples	in.	at	\$
	Bushings	to	in. at	\$
	Red's Inc'g	Couplings	to in. at	\$
	Union	in.	at	\$
	Meter	in.	at	\$
	Lbs. Br. Stone	at		\$
	Lbs. Sand	at		\$
	Bags Cement	at		\$
	Paving Brick	Mack Red Asphalt	at	\$
	Lead Joints	at		\$
	Leadite Joints	at		\$
7	Hrs.	Foreman	at 6.25	\$4.38
3	Hrs.	Common Labor	at 50	\$1.50
10	Hrs.	Common Labor	at 45	\$4.50
	Hrs.	Mason	at	\$
	Hrs.	Masons Helper	at	\$
	Hrs.	Compressor	at	\$
	Compensation	Ins	at 39	\$
	Trucking		at 1-	\$
	Builders Use of Water			\$
Total				\$18.93

1935-173

Labor and Material Report

19

48 Hunter at 3/4 tap



6 Main

Elev. of Main at tap 4 1/2

Gate at ●

● Gate at

● Curb Box

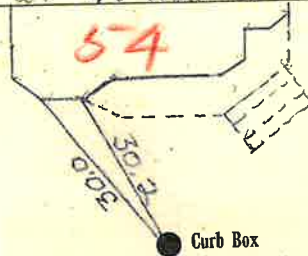
Old tap shut off at main

*[Handwritten signature]*

### Labor and Materials

1. Copper } Connection <i>3/4</i>	\$
1. Lead } Connection <i>3/4</i>	\$
1. Curb { Cock Valve T.S.&V. } <i>3/4</i> in	\$
1. Service Box { Short $3\frac{1}{2} \times 4\frac{1}{2}$ Long $4\frac{1}{2} \times 5\frac{1}{2}$ Old returned } Buff. or Raway	\$
2. Ft. .... in. { Copper Galv. Iron Cast Iron } Pipe at	\$
Nipples ..... in. at	\$
Bushings ..... to ..... in. at	\$
Red'g Inc'g } Couplings ..... to ..... in. at	\$
Union ..... in. at	\$
Meter ..... in. at	\$
Lbs. Br. Stone at	\$
Lbs. Sand at	\$
Bags Cement at	\$
Paving Brick { Mack Red Asphalt } at	\$
Lead Joints at	\$
Leadite Joints at	\$
Hrs. Foreman at	\$
Hrs. Common Labor at	\$
Hrs. Common Labor at	\$
Hrs. Mason at	\$
Hrs. Masons Helper at	\$
Hrs. Compressor at	\$
Compensation Ins	\$
Trucking	\$
Builders Use of Water	\$
<b>Total \$</b> .....	

*3/4" tap at 48 Hunter 54.*



6" Main Elev of Main at tap *4 1/2*

Gate at ● ● Gate at

● Curb Box