

LABOR AND MATERIALS

1	Copper Lead	{ Connection	3/4		\$ 1.23
1	Curb	{ Cock Valve T.S. & V.	3/4	in.	\$ 1.68
1	Service Box	{ Short 3 1/2 x 4 1/2			\$ 1.54
8	Old returned	{ Long 4 1/2 x 5 1/2		Buff. or Rdway	
25	Ft.	3/4	in.	{ Copper Galv. Iron Cast Iron	Pipe at 17 \$ 4.25
	Nipples	in. at			\$
	Bushings	to in. at			\$
	Red'g Inc'g	{ Couplings	to in. at		\$
	Union	in. at			\$
	Meter	in. at			\$
	Lead Joints	at			\$
	Leadite Joints	at			\$
	Hrs. Foreman	at			\$
3	Hrs. Chauffeur	at	6 1/2		\$ 1.88
4	Hrs. Tapper	at	"		\$ 2.50
	Hrs. Labor	at			\$
	Hrs. Labor	at			\$
	Hrs. Compressor	at			\$
	Compensation Ins.				\$.14
	Trucking				\$ 1.00
	Builders Use of Water				\$
	Tank Hessel				\$
1	Patch - 1/2	Sewer Dept			\$ 2.50
					\$
					\$
					\$ 16.77

26 - 1939

St.

121

Pr.

Hunter

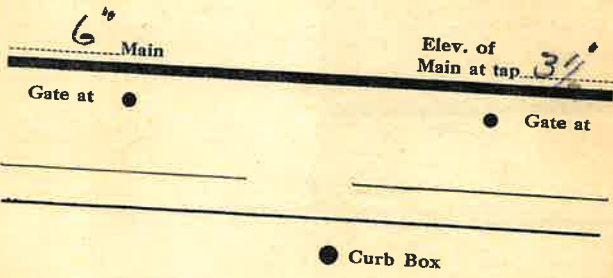
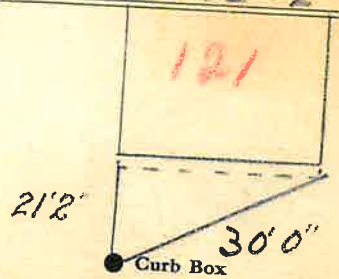
Ave. No. 109

Name of Owner Guy HAM

Tasciotti

Labor and Mat'l. Report

June 12 1939



New Top