

LABOR AND MATERIALS

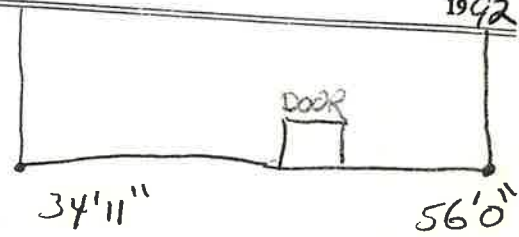
Copper } Connection		\$
Lead } Cock		
	Valve	in. \$
	T. S. & V.	
Service box } Short 3½ x 4½		
Old returned } Long 4½ x 5½		\$
Ft. 3/4 in. } Copper	Pipe at	\$
	G.I.	
	G.I.	
Nipples	in. at	\$
Bushings	to in. at	\$
Red'g } Coupl'gs	to in. at	\$
Inc'g }		
Union	in. at	\$
Meter	in. at	\$
		\$
Compound Joints	at	\$
Maintenance Foreman		\$
Hrs. Water Maint. Man-1	at	\$
Hrs. Water Maint. Man-2	at	\$
Hrs. Garage Foreman	at	\$
Hrs. Labor	at	\$
Hrs. Compressor	at	\$
		\$
Trucking		\$
Pav't Patch		\$
		\$
		\$
		\$
		\$
		\$
		\$

JACKSON ~~St.~~  
~~Pl.~~  
Ave. No. 14

Name of Owner

Labor and Mat'l. Report

1992



● Curb Box

12" Main

Elev. of Main at tap

Gate at ●

● Gate at

● Curb Box